



Elabscience[®]

www.elabscience.cn

ELISA Kits For Cancer Research



Cancer Research

There are more than 100 types of cancers, which are usually named for the organs or tissues where the cancers derive from. In all types of cancers, the phenomenon that some of the cells begin to divide incontinently and spread into surrounding tissues will appear.

Cancers can happen almost anywhere in the body. Cancer cells are able to ignore signals that normally tell cells to stop dividing or to start a process known as programmed cell death/apoptosis, by which the body can remove unneeded cells. Cancer cells can often evade the immune system, a network of organs, tissues and specialized cells that protects the body from infections and other conditions. Although the immune system normally removes damaged or abnormal cells from the body, some cancer cells are able to “hide” from it.

Cancers are genetic diseases, that is, they are caused by changes to genes that control the ways of our cell functions, especially how they grow and divide. The genovariation that contributes to cancers tends to affect three main types of genes, proto-oncogenes, tumor suppressor genes and DNA repair genes. These changes are sometimes called “drivers” of cancers. Tumor markers are a kind of substances bio-synthesized and secreted by gene expression of tumor cells or abnormally generated and fluctuating due to body’s responses to tumors. They play an important role in early detection, diagnosis and prognosis of tumors.

Cancer research is also one of Elabscience important R&D fields, each of our ELISA kits is developed with careful consideration for the relevance and specificity of the targets as well as the necessity of validated applications. We are meticulous in designing and testing of our products before you receive them, and unwavering in our commitment to provide scientific technical support throughout your project.



Invasion/Microenvironment

Cat. No.	Product Name	Detection Range	Sensitivity	Test Method
E-EL-H0006c	Human ANG(Angiogenin) ELISA Kit	15.63--1000pg/mL	9.38pg/mL	Sandwich
E-EL-H0009c	Human BAFF/CD257(B-Cell Activating Factor) ELISA Kit	62.5--4000pg/mL	37.5pg/mL	Sandwich
E-EL-H0012c	Human BMP-4(Bone Morphogenetic Protein 4) ELISA Kit	31.25--2000pg/mL	18.75pg/mL	Sandwich
E-EL-H0013c	Human BMP-7(Bone Morphogenetic Protein 7) ELISA Kit	31.25--2000pg/mL	18.75pg/mL	Sandwich
E-EL-H0014c	Human E-Cad(E-Cadherin) ELISA Kit	0.16--10ng/mL	0.1ng/mL	Sandwich
E-EL-H0017c	Human CASP3(Caspase 3) ELISA Kit	0.31--20ng/mL	0.19ng/mL	Sandwich
E-EL-H0018c	Human CTSB(Cathepsin B) ELISA Kit	0.16--10ng/mL	0.1ng/mL	Sandwich
E-EL-H0020c	Human MCP-1(Monocyte Chemotactic Protein 1) ELISA Kit	15.63--1000pg/mL	9.38pg/mL	Sandwich
E-EL-H0027c	Human MIP-3 α (Macrophage Inflammatory Protein 3 Alpha) ELISA Kit	15.63--1000pg/mL	9.38pg/mL	Sandwich
E-EL-H0048c	Human IL-8(Interleukin 8) ELISA Kit	31.25--2000pg/mL	18.75pg/mL	Sandwich
E-EL-H0050c	Human IP-10/CXCL10(Interferon Gamma Induced Protein 10kDa) ELISA Kit	7.81--500pg/mL	4.69pg/mL	Sandwich
E-EL-H0056c	Human Cyt-C(Cytochrome C) ELISA Kit	78.13--5000pg/mL	46.88pg/mL	Sandwich
E-EL-H0060c	Human EGFR(Epidermal Growth Factor Receptor) ELISA Kit	0.31--20ng/mL	0.19ng/mL	Sandwich
E-EL-H0063c	Human ES(Endostatin) ELISA Kit	0.16--10ng/mL	0.1ng/mL	Sandwich
E-EL-H0071c	Human AFGF/FGF1(Acidic Fibroblast Growth Factor 1) ELISA Kit	31.25--2000pg/mL	18.75pg/mL	Sandwich
E-EL-H0079c	Human G-CSF(Granulocyte Colony-stimulating Factor) ELISA Kit	39.06--2500pg/mL	23.44pg/mL	Sandwich
E-EL-H0084c	Human HGF(Hepatocyte Growth Factor) ELISA Kit	125--8000pg/mL	75pg/mL	Sandwich
E-EL-H0087c	Human IGFBP-3(Insulin-like Growth Factor Binding Protein 3) ELISA Kit	0.78--50ng/mL	0.47ng/mL	Sandwich
E-EL-H0111c	Human VEGF-A(Vascular Endothelial Cell Growth Factor A) ELISA Kit	31.25--2000pg/mL	18.75pg/mL	Sandwich
E-EL-H0116c	Human LH(Luteinizing Hormone) ELISA Kit	0.94--60mIU/mL	0.56mIU/mL	Sandwich
E-EL-H0132c	Human MMP-10(Matrix Metalloproteinase 10) ELISA Kit	78.13--5000pg/mL	46.88pg/mL	Sandwich
E-EL-H0134c	Human MMP-13(Matrix Metalloproteinase 13) ELISA Kit	0.31--20ng/mL	0.19ng/mL	Sandwich
E-EL-H0141c	Human PRL(Prolactin) ELISA Kit	1.56--100ng/mL	0.94ng/mL	Sandwich
E-EL-H0150c	Human IL-12(Interleukin 12) ELISA Kit	15.63--1000pg/mL	9.38pg/mL	Sandwich
E-EL-H0151c	Human IL-12 p40(Interleukin 12 p40) ELISA Kit	31.25--2000pg/mL	18.75pg/mL	Sandwich
E-EL-H0175c	Human HCG(Chorionic Gonadotropin) ELISA Kit	7.81--500mIU/mL	4.69mIU/mL	Sandwich
E-EL-H0179c	Human FN(Fibronectin) ELISA Kit	1.56--100ng/mL	0.94ng/mL	Sandwich
E-EL-H0184c	Human TIMP-1(Tissue Inhibitors of Metalloproteinase 1) ELISA Kit	0.16--10ng/mL	0.1ng/mL	Sandwich
E-EL-H0237c	Human AR(Amphiregulin) ELISA Kit	31.25--2000pg/mL	18.75pg/mL	Sandwich
E-EL-H0257c	Human ACTN2(Actinin Alpha 2) ELISA Kit	0.31--20ng/mL	0.19ng/mL	Sandwich
E-EL-H0324c	Human ANG(Angiostatin) ELISA Kit	31.25--2000ng/mL	18.75ng/mL	Sandwich



Cat. No.	Product Name	Detection Range	Sensitivity	Test Method
E-EL-H0422c	Human ANXA5(Annexin A5) ELISA Kit	0.31--20ng/mL	0.19ng/mL	Sandwich
E-EL-H0425c	Human IGF1R(Insulin Like Growth Factor 1 Receptor) ELISA Kit	0.31--20ng/mL	0.19ng/mL	Sandwich
E-EL-H0435c	Human IGF-2(Insulin Like Growth Factor 2) ELISA Kit	0.31--20ng/mL	0.19ng/mL	Sandwich
E-EL-H0483c	Human bFGF/FGF2(Basic Fibroblast Growth Factor) ELISA Kit	125--8000pg/mL	75pg/mL	Sandwich
E-EL-H0513c	Human MAPK14(Mitogen Activated Protein Kinase 14) ELISA Kit	1.56--100ng/mL	0.94ng/mL	Sandwich
E-EL-H0562c	Human BAX(Bcl-2 Associated X Protein) ELISA Kit	0.78--50ng/mL	0.47ng/mL	Sandwich
E-EL-H0570c	Human bTC(Betacellulin) ELISA Kit	15.63--1000pg/mL	9.38pg/mL	Sandwich
E-EL-H0669c	Human CTSD(Cathepsin D) ELISA Kit	46.88--3000pg/mL	28.13pg/mL	Sandwich
E-EL-H0932c	Human Smad1/MADH1(Mothers Against Decapentaplegic Homolog 1) ELISA Kit	0.78--50ng/mL	0.47ng/mL	Sandwich
E-EL-H1051c	Human GAL1(Galectin 1) ELISA Kit	0.78--50ng/mL	0.47ng/mL	Sandwich
E-EL-H1058c	Human GAL7(Galectin 7) ELISA Kit	125--8000pg/mL	75pg/mL	Sandwich
E-EL-H1087c	Human VEGFR1/FLT1(Vascular Endothelial Growth Factor Receptor 1) ELISA Kit	125--8000pg/mL	75pg/mL	Sandwich
E-EL-H1141c	Human TSH(Thyroid Stimulating Hormone) ELISA Kit	0.16--10ng/mL	0.1ng/mL	Sandwich
E-EL-H1298c	Human SDC1(Syndecan 1) ELISA Kit	0.16--10ng/mL	0.1ng/mL	Sandwich
E-EL-H1347c	Human OPN(Osteopontin) ELISA Kit	0.31--20ng/mL	0.19ng/mL	Sandwich
E-EL-H1441c	Human MMP-1(Matrix Metalloproteinase 1) ELISA Kit	0.16--10ng/mL	0.1ng/mL	Sandwich
E-EL-H1446c	Human MMP-3(Matrix Metalloproteinase 3) ELISA Kit	0.16--10ng/mL	0.1ng/mL	Sandwich
E-EL-H1449c	Human MMP-7(Matrix Metalloproteinase 7) ELISA Kit	0.16--10ng/mL	0.1ng/mL	Sandwich
E-EL-H1450c	Human MMP-8(Matrix Metalloproteinase 8) ELISA Kit	0.16--10ng/mL	0.1ng/mL	Sandwich
E-EL-H1451c	Human MMP-9(Matrix Metalloproteinase 9) ELISA Kit	31.25--2000pg/mL	18.75pg/mL	Sandwich
E-EL-H1453c	Human TIMP-2(Tissue Inhibitors of Metalloproteinase 2) ELISA Kit	0.16--10ng/mL	0.1ng/mL	Sandwich
E-EL-H1454c	Human TIMP-3(Tissue Inhibitors of Metalloproteinase 3) ELISA Kit	62.5--4000pg/mL	37.5pg/mL	Sandwich
E-EL-H1555c	Human PGF(Placental Growth Factor) ELISA Kit	15.63--1000pg/mL	9.38pg/mL	Sandwich
E-EL-H1574c	Human PTX 3/TSG-14(Pentraxin 3) ELISA Kit	0.31--20ng/mL	0.19ng/mL	Sandwich
E-EL-H1584c	Human Surv(Survivin) ELISA Kit	31.25--2000pg/mL	18.75pg/mL	Sandwich
E-EL-H1586c	Human TGF- α (Transforming Growth Factor Alpha) ELISA Kit	31.25--2000pg/mL	18.75pg/mL	Sandwich
E-EL-H1590c	Human TSP-2(Thrombospondin-2) ELISA Kit	0.31--20ng/mL	0.19ng/mL	Sandwich
E-EL-H1593c	Human TRAIL/TNFSF10(Tumor Necrosis Factor Related Apoptosis Inducing Ligand) ELISA Kit	15.63--1000pg/mL	9.38pg/mL	Sandwich
E-EL-H1599c	Human PLAUR/uPAR(Plasminogen Activator, Urokinase Receptor) ELISA Kit	62.5--4000pg/mL	37.5pg/mL	Sandwich
E-EL-H1600c	Human VEGF-C(Vascular Endothelial Growth Factor C) ELISA Kit	109.38--7000pg/mL	65.63pg/mL	Sandwich
E-EL-H1606c	Human EMMPRIN/CD147(Extracellular Matrix Metalloproteinase Inducer) ELISA Kit	15.63--1000pg/mL	9.38pg/mL	Sandwich
E-EL-H1779c	Human PLAU/uPA(Urokinase-Type Plasminogen Activator) ELISA Kit	62.5--4000pg/mL	37.5pg/mL	Sandwich



Cat. No.	Product Name	Detection Range	Sensitivity	Test Method
E-EL-H1946c	Human NE/ELA2(Neutrophil Elastase/Elastase-2) ELISA Kit	0.78--50ng/mL	0.47ng/mL	Sandwich
E-EL-H2104c	Human PAI1(Plasminogen Activator Inhibitor 1) ELISA Kit	0.16--10ng/mL	0.1ng/mL	Sandwich
E-EL-H2157c	Human VE-Cadherin(Vascular Endothelial Cadherin) ELISA Kit	0.16--10ng/mL	0.1ng/mL	Sandwich
E-EL-H2166c	Human sVCAM-1/CD106(soluble Vascular Cell Adhesion Molecule 1) ELISA Kit	3.13--200ng/mL	1.88ng/mL	Sandwich
E-EL-H2168c	Human VWF(Von Willebrand Factor) ELISA Kit	1.56--100ng/mL	0.94ng/mL	Sandwich
E-EL-H2216c	Human PF4(Platelet Factor 4) ELISA Kit	1.56--100ng/mL	0.94ng/mL	Sandwich
E-EL-H2305c	Human TACE(TNF α Converting Enzyme) ELISA Kit	62.5--400pg/mL	37.5pg/mL	Sandwich
E-EL-H2312c	Human TWEAK(Tumour Necrosis Factor Related Weak Inducer of Apoptosis) ELISA Kit	78.13--5000pg/mL	46.88pg/mL	Sandwich
E-EL-H5200c	Human LTF/LF(Lactoferrin) ELISA Kit	0.31--20ng/mL	0.19ng/mL	Sandwich
E-EL-H5439c	Human INS(Insulin) ELISA Kit	3.13--200ng/mL	1.88ng/mL	Sandwich
E-EL-H5587c	Human VCAM-1/CD106(Vasculuar Cell Adhesion Molecule 1) ELISA Kit	1.56--100ng/mL	0.94ng/mL	Sandwich
E-EL-H5589c	Human AITRL/TNFSF18(Activation-inducible TNF-related Ligand) ELISA Kit	0.16--10ng/mL	0.1ng/mL	Sandwich
E-EL-M0004c	Mouse BAFF/CD257(B-cell Activating Factor) ELISA Kit	62.5--4000pg/mL	37.5pg/mL	Sandwich
E-EL-M0006c	Mouse MCP-1(Monocyte Chemotactic Protein 1) ELISA Kit	15.63--1000pg/mL	9.38pg/mL	Sandwich
E-EL-M0013c	Mouse MIP-3 α (Macrophage Inflammatory Protein 3 Alpha) ELISA Kit	7.81--500pg/mL	4.69pg/mL	Sandwich
E-EL-M0021c	Mouse IP-10/CXCL10(Interferon Gamma Induced Protein 10kDa) ELISA Kit	31.25--2000pg/mL	18.75pg/mL	Sandwich
E-EL-M0023c	Mouse Cyt-C(Cytochrome C) ELISA Kit	0.39--25ng/mL	0.23ng/mL	Sandwich
E-EL-M0031c	Mouse G-CSF(Granulocyte Colony-stimulating Factor) ELISA Kit	15.63--1000pg/mL	9.38pg/mL	Sandwich
E-EL-M0035c	Mouse IGFBP-3(Insulin-like Growth Factor Binding Protein 3) ELISA Kit	62.5--4000pg/mL	37.5pg/mL	Sandwich
E-EL-M0057c	Mouse LH(Luteinizing Hormone) ELISA Kit	0.47--30ng/mL	0.28ng/mL	Sandwich
E-EL-M0074c	Mouse MMP-10(Matrix Metalloproteinase 10) ELISA Kit	62.5--4000pg/mL	37.5pg/mL	Sandwich
E-EL-M0076c	Mouse MMP-13(Matrix Metalloproteinase 13) ELISA Kit	78.13--5000pg/mL	46.88pg/mL	Sandwich
E-EL-M0078c	Mouse ANG(Angiogenin) ELISA Kit	46.88--3000pg/mL	28.13pg/mL	Sandwich
E-EL-M0083c	Mouse PRL(Prolactin) ELISA Kit	0.16--10ng/mL	0.1ng/mL	Sandwich
E-EL-M0096c	Mouse AGT(Angiotensinogen) ELISA Kit	0.63--40ng/mL	0.38ng/mL	Sandwich
E-EL-M0097c	Mouse ANG1(Angiopoietin 1) ELISA Kit	0.16--10ng/mL	0.1ng/mL	Sandwich
E-EL-M0098c	Mouse ANG2(Angiopoietin 2) ELISA Kit	31.25--2000pg/mL	18.75pg/mL	Sandwich
E-EL-M0099c	Mouse ANXA5(Annexin A5) ELISA Kit	0.16--10ng/mL	0.1ng/mL	Sandwich
E-EL-M0170c	Mouse bFGF/FGF2(Basic Fibroblast Growth Factor) ELISA Kit	15.63--1000pg/mL	9.38pg/mL	Sandwich
E-EL-M0178c	Mouse Bax(Bcl-2 Associated X Protein) ELISA Kit	0.16--10ng/mL	0.1ng/mL	Sandwich
E-EL-M0181c	Mouse BTC(Betacellulin) ELISA Kit	7.81--500pg/mL	4.69pg/mL	Sandwich
E-EL-M0194c	Mouse BMP-4(Bone Morphogenetic Protein 4) ELISA Kit	31.25--2000pg/mL	18.75pg/mL	Sandwich
E-EL-M0196c	Mouse BMP-7(Bone Morphogenetic Protein 7) ELISA Kit	15.63--1000pg/mL	9.38pg/mL	Sandwich



Cat. No.	Product Name	Detection Range	Sensitivity	Test Method
E-EL-M0210c	Mouse VE-Cadherin(Vascular Endothelial Cadherin) ELISA Kit	0.16--10ng/mL	0.1ng/mL	Sandwich
E-EL-M0211c	Mouse E-Cad(E-Cadherin) ELISA Kit	62.5--4000pg/mL	37.5pg/mL	Sandwich
E-EL-M0238c	Mouse CASP3(Caspase 3) ELISA Kit	0.16--10ng/mL	0.1ng/mL	Sandwich
E-EL-M0249c	Mouse CTSD(Cathepsin D) ELISA Kit	31.25--2000pg/mL	18.75pg/mL	Sandwich
E-EL-M0453c	Mouse ES(Endostatin) ELISA Kit	0.16--10ng/mL	0.1ng/mL	Sandwich
E-EL-M0470c	Mouse EPCAM(Epithelial Cell Adhesion Molecule) ELISA Kit	78.13--5000pg/mL	46.88pg/mL	Sandwich
E-EL-M0506c	Mouse FN(Fibronectin) ELISA Kit	1.56--100ng/mL	0.94ng/mL	Sandwich
E-EL-M0527c	Mouse GAL1(Galectin 1) ELISA Kit	0.78--50ng/mL	0.47ng/mL	Sandwich
E-EL-M0532c	Mouse GAL7(Galectin 7) ELISA Kit	0.16--10ng/mL	0.1ng/mL	Sandwich
E-EL-M0626c	Mouse MMP-3(Matrix Metalloproteinase 3) ELISA Kit	0.16--10ng/mL	0.1ng/mL	Sandwich
E-EL-M0627c	Mouse MMP-9(Matrix Metalloproteinase-9) ELISA Kit	78.13--5000pg/mL	46.88pg/mL	Sandwich
E-EL-M0629c	Mouse OPN(Osteopontin) ELISA Kit	39.06--2500pg/mL	23.44pg/mL	Sandwich
E-EL-M0641c	Mouse TIMP-1(Tissue Inhibitors of Metalloproteinase 1) ELISA Kit	0.16--10ng/mL	0.1ng/mL	Sandwich
E-EL-M0648c	Mouse FLT1/VEGFR1(Vascular Endothelial Growth Factor Receptor 1) ELISA Kit	0.16--10ng/mL	0.1ng/mL	Sandwich
E-EL-M0664c	Mouse HGF(Hepatocyte Growth Factor) ELISA Kit	0.16--10ng/mL	0.1ng/mL	Sandwich
E-EL-M0704c	Mouse IGF-2(Insulin Like Growth Factor 2) ELISA Kit	31.25--2000pg/mL	18.75pg/mL	Sandwich
E-EL-M0726c	Mouse IL-12(Interleukin 12) ELISA Kit	15.63--1000pg/mL	9.38pg/mL	Sandwich
E-EL-M0740c	Mouse AR(Amphiregulin) ELISA Kit	15.63--1000pg/mL	9.38pg/mL	Sandwich
E-EL-M0746c	Mouse LTF/LF(Lactoferrin) ELISA Kit	62.5--4000pg/mL	37.5pg/mL	Sandwich
E-EL-M0783c	Mouse MMP-7(Matrix Metalloproteinase 7) ELISA Kit	62.5--4000pg/mL	37.5pg/mL	Sandwich
E-EL-M0784c	Mouse MMP-8(Matrix Metalloproteinase 8) ELISA Kit	0.31--20ng/mL	0.19ng/mL	Sandwich
E-EL-M0911c	Mouse PGF(Placental Growth Factor) ELISA Kit	12.5--800pg/mL	7.5pg/mL	Sandwich
E-EL-M0914c	Mouse PAI1(Plasminogen Activator Inhibitor 1) ELISA Kit	0.16--10ng/mL	0.1ng/mL	Sandwich
E-EL-M0926c	Mouse PF4(Platelet Factor 4) ELISA Kit	78.13--5000pg/mL	46.88pg/mL	Sandwich
E-EL-M1062c	Mouse Smad1/MADH1(Mothers Against Decapentaplegic Homolog 1) ELISA Kit	0.16--10ng/mL	0.1ng/mL	Sandwich
E-EL-M1064c	Mouse ACTN2(Actinin Alpha 2) ELISA Kit	0.31--20ng/mL	0.19ng/mL	Sandwich
E-EL-M1084c	Mouse TRAIL/TNFSF10(Tumor Necrosis Factor Related Apoptosis Inducing Ligand) ELISA Kit	15.63--1000pg/mL	9.38pg/mL	Sandwich
E-EL-M1153c	Mouse TSH(Thyroid Stimulating Hormone) ELISA Kit	1.25--80ng/mL	0.75ng/mL	Sandwich
E-EL-M1164c	Mouse TIMP-2(Tissue Inhibitors of Metalloproteinase 2) ELISA Kit	0.31--20ng/mL	0.19ng/mL	Sandwich
E-EL-M1165c	Mouse TIMP-3(Tissue Inhibitors of Metalloproteinase 3) ELISA Kit	0.16--10ng/mL	0.1ng/mL	Sandwich
E-EL-M1190c	Mouse TGF- α (Transforming Growth Factor Alpha) ELISA Kit	15.63--1000pg/mL	9.38pg/mL	Sandwich
E-EL-M1226c	Mouse PLAU/uPA(Urokinase-Type Plasminogen Activator) ELISA Kit	15.63--1000pg/mL	9.38pg/mL	Sandwich
E-EL-M1230c	Mouse VEGF-C(Vascular Endothelial Growth Factor C) ELISA Kit	31.25--2000pg/mL	18.75pg/mL	Sandwich



Cat. No.	Product Name	Detection Range	Sensitivity	Test Method
E-EL-M1233c	Mouse VCAM-1/CD106(Vasculoar cell adhesion molecule 1) ELISA Kit	0.16--10ng/mL	0.1ng/mL	Sandwich
E-EL-M1247c	Mouse vWF(von Willebrand Factor) ELISA Kit	1.25--80ng/mL	0.75ng/mL	Sandwich
E-EL-M1274c	Mouse PLAU/uPAR(Plasminogen Activator, Urokinase Receptor) ELISA Kit	78.13--5000pg/mL	46.88pg/mL	Sandwich
E-EL-M2451c	Mouse IL-12/p40(Interleukin 12 p40) ELISA Kit	15.63--1000pg/mL	9.38pg/mL	Sandwich
E-EL-M2614c	Mouse INS(Insulin) ELISA Kit	0.31--20ng/mL	0.19ng/mL	Sandwich
E-EL-MK2264c	Monkey INS(Insulin) ELISA Kit	3.13--200ng/mL	1.88ng/mL	Sandwich
E-EL-R0006c	Rat Cyt-C(Cytochrome C) ELISA Kit	0.39--25ng/mL	0.23ng/mL	Sandwich
E-EL-R0026c	Rat LH(Luteinizing Hormone) ELISA Kit	1.56--100mIU/mL	0.94mIU/mL	Sandwich
E-EL-R0043c	Rat MMP-10(Matrix Metalloproteinase 10) ELISA Kit	0.16--10ng/mL	0.1ng/mL	Sandwich
E-EL-R0045c	Rat MMP-13(Matrix Metalloproteinase 13) ELISA Kit	0.31--20ng/mL	0.19ng/mL	Sandwich
E-EL-R0052c	Rat PRL(Prolactin) ELISA Kit	0.78--50ng/mL	0.47ng/mL	Sandwich
E-EL-R0063c	Rat IL-12 p40(Interleukin 12 p40) ELISA Kit	12.5--800pg/mL	7.5pg/mL	Sandwich
E-EL-R0064c	Rat IL-12(Interleukin 12) ELISA Kit	15.63--1000pg/mL	9.38pg/mL	Sandwich
E-EL-R0091c	Rat bFGF/FGF2(Basic Fibroblast Growth Factor) ELISA Kit	15.63--1000pg/mL	9.38pg/mL	Sandwich
E-EL-R0098c	Rat BAX(BCL-2 Associated X Protein) ELISA Kit	0.16--10ng/mL	0.1ng/mL	Sandwich
E-EL-R0101c	Rat BTC(Betacellulin) ELISA Kit	9.38--600pg/mL	5.63pg/mL	Sandwich
E-EL-R0116c	Rat BMP-4(Bone Morphogenetic Protein 4) ELISA Kit	15.63--1000pg/mL	9.38pg/mL	Sandwich
E-EL-R0119c	Rat BMP-7(Bone Morphogenetic Protein 7) ELISA Kit	15.63--1000pg/mL	9.38pg/mL	Sandwich
E-EL-R0130c	Rat VE-Cadherin(Vascular Endothelial Cadherin) ELISA Kit	0.16--10ng/mL	0.1ng/mL	Sandwich
E-EL-R0160c	Rat CASP3(Caspase 3) ELISA Kit	0.31--20ng/mL	0.19ng/mL	Sandwich
E-EL-R0171c	Rat CTSD(Cathepsin D) ELISA Kit	15.63--1000pg/mL	9.38pg/mL	Sandwich
E-EL-R0347c	Rat E-Cad(E-Cadherin) ELISA Kit	0.16--10ng/mL	0.1ng/mL	Sandwich
E-EL-R0364c	Rat ES(Endostatin) ELISA Kit	0.16--10ng/mL	0.1ng/mL	Sandwich
E-EL-R0397c	Rat GAL1(Galectin 1) ELISA Kit	0.63--40ng/mL	0.38ng/mL	Sandwich
E-EL-R0401c	Rat GAL7(Galectin 7) ELISA Kit	0.16--10ng/mL	0.1ng/mL	Sandwich
E-EL-R0454c	Rat G-CSF(Granulocyte Colony Stimulating Factor) ELISA Kit	15.63--1000pg/mL	9.38pg/mL	Sandwich
E-EL-R0493c	Rat HB-EGF(Heparin-binding Epidermal Growth Factor-like Growth Factor) ELISA Kit	15.63--1000pg/mL	9.38pg/mL	Sandwich
E-EL-R0496c	Rat HGF(Hepatocyte Growth Factor) ELISA Kit	62.5--4000pg/mL	37.5pg/mL	Sandwich
E-EL-R0530c	Rat IGF-2(Insulin Like Growth Factor 2) ELISA Kit	46.88--3000pg/mL	28.13pg/mL	Sandwich
E-EL-R0533c	Rat IGFBP-3(Insulin-Like Growth Factor Binding Protein 3) ELISA Kit	78.13--5000pg/mL	46.88pg/mL	Sandwich
E-EL-R0540c	Rat TIMP-1(Tissue Inhibitors of Metalloproteinase 1) ELISA Kit	0.16--10ng/mL	0.1ng/mL	Sandwich
E-EL-R0546c	Rat IP-10/CXCL10(Interferon Gamma Induced Protein 10kDa) ELISA Kit	31.25--2000pg/mL	18.75pg/mL	Sandwich
E-EL-R0574c	Rat AR(Amphiregulin) ELISA Kit	31.25--2000pg/mL	18.75pg/mL	Sandwich



Cat. No.	Product Name	Detection Range	Sensitivity	Test Method
E-EL-R0577c	Rat LTF/LF(Lactoferrin) ELISA Kit	31.25--2000pg/mL	18.75pg/mL	Sandwich
E-EL-R0578c	Rat FN(Fibronectin) ELISA Kit	1.25--80ng/mL	0.75ng/mL	Sandwich
E-EL-R0605c	Rat MIP-3 α (Macrophage Inflammatory Protein 3 Alpha) ELISA Kit	15.63--1000pg/mL	9.38pg/mL	Sandwich
E-EL-R0619c	Rat MMP-3(Matrix Metalloproteinase 3) ELISA Kit	0.16--10ng/mL	0.1ng/mL	Sandwich
E-EL-R0622c	Rat MMP-7(Matrix Metalloproteinase 7) ELISA Kit	0.16--10ng/mL	0.1ng/mL	Sandwich
E-EL-R0623c	Rat MMP-8(Matrix Metalloproteinase 8) ELISA Kit	78.13--5000pg/mL	46.88pg/mL	Sandwich
E-EL-R0624c	Rat MMP-9(Matrix Metalloproteinase 9) ELISA Kit	0.78--50ng/mL	0.47ng/mL	Sandwich
E-EL-R0625c	Rat ANG(Angiogenin) ELISA Kit	62.5--4000pg/mL	37.5pg/mL	Sandwich
E-EL-R0633c	Rat MCP-1(Monocyte Chemotactic Protein 1) ELISA Kit	0.16--10ng/mL	0.1ng/mL	Sandwich
E-EL-R0637c	Rat Smad1/MADH1(Mothers Against Decapentaplegic Homolog 1) ELISA Kit	0.31--20ng/mL	0.19ng/mL	Sandwich
E-EL-R0702c	Rat OPN(Osteopontin) ELISA Kit	1.56--100ng/mL	0.94ng/mL	Sandwich
E-EL-R0742c	Rat PGF(Placental Growth Factor) ELISA Kit	7.81--500pg/mL	4.69pg/mL	Sandwich
E-EL-R0744c	Rat PAI1(Plasminogen Activator Inhibitor 1) ELISA Kit	0.31--20ng/mL	0.19ng/mL	Sandwich
E-EL-R0759c	Rat PF-4(Platelet Factor-4) ELISA Kit	0.16--10ng/mL	0.1ng/mL	Sandwich
E-EL-R0885c	Rat ACTN2(Actinin Alpha 2) ELISA Kit	0.16--10ng/mL	0.1ng/mL	Sandwich
E-EL-R0911c	Rat FLT1/VEGFR1(Vascular Endothelial Growth Factor Receptor 1) ELISA Kit	0.16--10ng/mL	0.1ng/mL	Sandwich
E-EL-R0976c	Rat TSH(Thyroid Stimulating Hormone) ELISA Kit	1.25--80ng/mL	0.75ng/mL	Sandwich
E-EL-R0985c	Rat TIMP-2(Tissue Inhibitors of Metalloproteinase 2) ELISA Kit	0.63--40ng/mL	0.38ng/mL	Sandwich
E-EL-R0986c	Rat TIMP-3(Tissue Inhibitors of Metalloproteinase 3) ELISA Kit	0.16--10ng/mL	0.1ng/mL	Sandwich
E-EL-R0996c	Rat SDC1(Syndecan 1) ELISA Kit	1.56--100ng/mL	0.94ng/mL	Sandwich
E-EL-R1012c	Rat TGF- α (Transforming Growth Factor Alpha) ELISA Kit	15.63--1000pg/mL	9.38pg/mL	Sandwich
E-EL-R1041c	Rat TRAIL/TNFSF10(Tumor Necrosis Factor Related Apoptosis Inducing Ligand) ELISA Kit	15.63--1000pg/mL	9.38pg/mL	Sandwich
E-EL-R1053c	Rat PLAU/uPA(Urokinase-Type Plasminogen Activator) ELISA Kit	15.63--1000pg/mL	9.38pg/mL	Sandwich
E-EL-R1055c	Rat PLAU/uPAR(Plasminogen Activator, Urokinase Receptor) ELISA Kit	78.13--5000pg/mL	46.88pg/mL	Sandwich
E-EL-R1057c	Rat VEGF-C(Vascular Endothelial Growth Factor C) ELISA Kit	31.25--2000pg/mL	18.75pg/mL	Sandwich
E-EL-R1079c	Rat VWF(Von Willebrand Factor) ELISA Kit	0.16--10ng/mL	0.1ng/mL	Sandwich
E-EL-R1080c	Rat XIAP(X-Linked Inhibitor Of Apoptosis Protein) ELISA Kit	0.16--10ng/mL	0.1ng/mL	Sandwich
E-EL-R2386c	Rat EGFR(Epidermal Growth Factor Receptor) ELISA Kit	78.13--5000pg/mL	46.88pg/mL	Sandwich
E-EL-R2396c	Rat BAFF/CD257(B-Cell Activating Factor) ELISA Kit	62.5--4000pg/mL	37.5pg/mL	Sandwich
E-EL-R2407c	Rat AFGF/FGF1(Acidic Fibroblast Growth Factor 1) ELISA Kit	15.63--1000pg/mL	9.38pg/mL	Sandwich
E-EL-R2414c	Rat CTSB(Cathepsin B) ELISA Kit	0.16--10ng/mL	0.1ng/mL	Sandwich
E-EL-R2466c	Rat INS(Insulin) ELISA Kit	3.13--200ng/mL	1.88ng/mL	Sandwich



Tumor Immunology

Cat. No.	Product Name	Detection Range	Sensitivity	Test Method
E-EL-H0032c	Human CTACK(Cutaneous T-cell Attracting Chemokine) ELISA Kit	15.63--1000pg/mL	9.38pg/mL	Sandwich
E-EL-H0075c	Human Flt3L(FMS-like Tyrosine Kinase 3 Ligand) ELISA Kit	15.63--1000pg/mL	9.38pg/mL	Sandwich
E-EL-H0088c	Human IL-1 α (Interleukin 1 Alpha) ELISA Kit	3.91--250pg/mL	2.35pg/mL	Sandwich
E-EL-H0091c	Human PSA(Prostate Specific Antigen) ELISA Kit	0.31--20ng/mL	0.19ng/mL	Sandwich
E-EL-H0099c	Human IL-2(Interleukin 2) ELISA Kit	125--8000pg/mL	75pg/mL	Sandwich
E-EL-H0100c	Human IL-3(Interleukin 3) ELISA Kit	15.63--1000pg/mL	9.38pg/mL	Sandwich
E-EL-H0101c	Human IL-4(Interleukin 4) ELISA Kit	31.25--2000pg/mL	18.75pg/mL	Sandwich
E-EL-H0102c	Human IL-6(Interleukin 6) ELISA Kit	7.81--500pg/mL	4.69pg/mL	Sandwich
E-EL-H0103c	Human IL-10(Interleukin 10) ELISA Kit	7.81--500pg/mL	4.69pg/mL	Sandwich
E-EL-H0104c	Human IL-13(Interleukin 13) ELISA Kit	15.63--1000pg/mL	9.38pg/mL	Sandwich
E-EL-H0108c	Human IFN- γ (Interferon Gamma) ELISA Kit	15.63--1000pg/mL	9.38pg/mL	Sandwich
E-EL-H0109c	Human TNF- α (Tumor Necrosis Factor Alpha) ELISA Kit	7.81--500pg/mL	4.69pg/mL	Sandwich
E-EL-H0149c	Human IL-1 β (Interleukin 1 Beta) ELISA Kit	7.81--500pg/mL	4.69pg/mL	Sandwich
E-EL-H0150c	Human IL-12(Interleukin 12) ELISA Kit	15.63--1000pg/mL	9.38pg/mL	Sandwich
E-EL-H0151c	Human IL-12 p40(Interleukin 12 p40) ELISA Kit	31.25--2000pg/mL	18.75pg/mL	Sandwich
E-EL-H0180c	Human IL-9(Interleukin 9) ELISA Kit	15.63--1000pg/mL	9.38pg/mL	Sandwich
E-EL-H0191c	Human IL-5(Interleukin 5) ELISA Kit	15.63--1000pg/mL	9.38pg/mL	Sandwich
E-EL-H0222c	Human IL-15(Interleukin 15) ELISA Kit	15.63--1000pg/mL	9.38pg/mL	Sandwich
E-EL-H0235c	Human IL-16(Interleukin 16) ELISA Kit	31.25--2000pg/mL	18.75pg/mL	Sandwich
E-EL-H0643c	Human CEA(Carcinoembryonic Antigen) ELISA Kit	0.63--40ng/mL	0.38ng/mL	Sandwich
E-EL-H0648c	Human IL-7(Interleukin 7) ELISA Kit	7.81--500pg/mL	4.69pg/mL	Sandwich
E-EL-H2305c	Human TACE(TNF α Converting Enzyme) ELISA Kit	62.5--4000pg/mL	37.5pg/mL	Sandwich
E-EL-H2338c	Human IL-27(Interleukin 27) ELISA Kit	31.25--2000pg/mL	18.75pg/mL	Sandwich
E-EL-H2404c	Human MIA1(Melanoma Inhibitory Activity Protein 1) ELISA Kit	7.81--500pg/mL	4.69pg/mL	Sandwich
E-EL-H2450c	Human IL-21(Interleukin 21) ELISA Kit	62.5--4000pg/mL	37.5pg/mL	Sandwich
E-EL-M0030c	Mouse Flt3L(FMS-like Tyrosine Kinase 3 Ligand) ELISA Kit	15.63--1000pg/mL	9.38pg/mL	Sandwich
E-EL-M0036c	Mouse IL-1 α (Interleukin 1 Alpha) ELISA Kit	15.63--1000pg/mL	9.38pg/mL	Sandwich
E-EL-M0037c	Mouse IL-1 β (Interleukin 1 Beta) ELISA Kit	7.81--500pg/mL	4.69pg/mL	Sandwich
E-EL-M0042c	Mouse IL-2(Interleukin 2) ELISA Kit	15.63--1000pg/mL	9.38pg/mL	Sandwich
E-EL-M0043c	Mouse IL-4(Interleukin 4) ELISA Kit	31.25--2000pg/mL	18.75pg/mL	Sandwich
E-EL-M0044c	Mouse IL-6(Interleukin 6) ELISA Kit	31.25--2000pg/mL	18.75pg/mL	Sandwich
E-EL-M0046c	Mouse IL-10(Interleukin 10) ELISA Kit	15.63--1000pg/mL	9.38pg/mL	Sandwich
E-EL-M0048c	Mouse IFN- γ (Interferon Gamma) ELISA Kit	15.63--1000pg/mL	9.38pg/mL	Sandwich



Cat. No.	Product Name	Detection Range	Sensitivity	Test Method
E-EL-M0049c	Mouse TNF- α (Tumor Necrosis Factor Alpha) ELISA Kit	31.25--2000pg/mL	18.75pg/mL	Sandwich
E-EL-M0232c	Mouse CEA(Carcinoembryonic Antigen) ELISA Kit	62.5--4000pg/mL	37.5pg/mL	Sandwich
E-EL-M0371c	Mouse CTACK(Cutaneous T-Cell Attracting Chemokine) ELISA Kit	62.5--4000pg/mL	37.5pg/mL	Sandwich
E-EL-M0721c	Mouse IL-3(Interleukin 3) ELISA Kit	15.63--1000pg/mL	9.38pg/mL	Sandwich
E-EL-M0722c	Mouse IL-5(Interleukin 5) ELISA Kit	15.63--1000pg/mL	9.38pg/mL	Sandwich
E-EL-M0723c	Mouse IL-7(Interleukin 7) ELISA Kit	15.63--1000pg/mL	9.38pg/mL	Sandwich
E-EL-M0724c	Mouse IL-9(Interleukin 9) ELISA Kit	15.63--1000pg/mL	9.38pg/mL	Sandwich
E-EL-M0726c	Mouse IL-12(Interleukin 12) ELISA Kit	15.63--1000pg/mL	9.38pg/mL	Sandwich
E-EL-M0727c	Mouse IL-13(Interleukin 13) ELISA Kit	31.25--2000pg/mL	18.75pg/mL	Sandwich
E-EL-M0728c	Mouse IL-15(Interleukin 15) ELISA Kit	15.63--1000pg/mL	9.38pg/mL	Sandwich
E-EL-M0729c	Mouse IL-16(Interleukin 16) ELISA Kit	15.63--1000pg/mL	9.38pg/mL	Sandwich
E-EL-M0732c	Mouse IL-27(Interleukin 27) ELISA Kit	31.25--2000pg/mL	18.75pg/mL	Sandwich
E-EL-M0961c	Mouse PSA(Prostate Specific Antigen) ELISA Kit	0.16--10ng/mL	0.1ng/mL	Sandwich
E-EL-M1273c	Mouse IL-21(Interleukin 21) ELISA Kit	31.25--2000pg/mL	18.75pg/mL	Sandwich
E-EL-M2451c	Mouse IL-12/p40(Interleukin 12 p40) ELISA Kit	15.63--1000pg/mL	9.38pg/mL	Sandwich
E-EL-R0009c	Rat IFN- γ (Interferon Gamma) ELISA Kit	31.25--2000pg/mL	18.75pg/mL	Sandwich
E-EL-R0011c	Rat IL-1 α (Interleukin 1 Alpha) ELISA Kit	15.63--1000pg/mL	9.38pg/mL	Sandwich
E-EL-R0012c	Rat IL-1 β (Interleukin 1 Beta) ELISA Kit	31.25--2000pg/mL	18.75pg/mL	Sandwich
E-EL-R0013c	Rat IL-2(Interleukin 2) ELISA Kit	31.25--2000pg/mL	18.75pg/mL	Sandwich
E-EL-R0014c	Rat IL-4(Interleukin 4) ELISA Kit	15.63--1000pg/mL	9.38pg/mL	Sandwich
E-EL-R0015c	Rat IL-6(Interleukin 6) ELISA Kit	62.5--4000pg/mL	37.5pg/mL	Sandwich
E-EL-R0016c	Rat IL-10(Interleukin 10) ELISA Kit	31.25--2000pg/mL	18.75pg/mL	Sandwich
E-EL-R0019c	Rat TNF- α (Tumor Necrosis Factor Alpha) ELISA Kit	78.13--5000pg/mL	46.88pg/mL	Sandwich
E-EL-R0063c	Rat IL-12 p40(Interleukin 12 p40) ELISA Kit	12.5--800pg/mL	7.5pg/mL	Sandwich
E-EL-R0064c	Rat IL-12(Interleukin 12) ELISA Kit	15.63--1000pg/mL	9.38pg/mL	Sandwich
E-EL-R0150c	Rat CEA(Carcinoembryonic Antigen) ELISA Kit	0.16--10ng/mL	0.1ng/mL	Sandwich
E-EL-R0285c	Rat CTACK(Cutaneous T-Cell Attracting Chemokine) ELISA Kit	62.5--4000pg/mL	37.5pg/mL	Sandwich
E-EL-R0556c	Rat IL-3(Interleukin 3) ELISA Kit	15.63--1000pg/mL	9.38pg/mL	Sandwich
E-EL-R0558c	Rat IL-5(Interleukin 5) ELISA Kit	15.63--1000pg/mL	9.38pg/mL	Sandwich
E-EL-R0559c	Rat IL-7(Interleukin 7) ELISA Kit	15.63--1000pg/mL	9.38pg/mL	Sandwich
E-EL-R0563c	Rat IL-13(Interleukin 13) ELISA Kit	15.63--1000pg/mL	9.38pg/mL	Sandwich
E-EL-R0564c	Rat IL-15(Interleukin 15) ELISA Kit	15.63--1000pg/mL	9.38pg/mL	Sandwich
E-EL-R0565c	Rat IL-16(Interleukin 16) ELISA Kit	15.63--1000pg/mL	9.38pg/mL	Sandwich
E-EL-R0568c	Rat IL-21(Interleukin 21) ELISA Kit	15.63--1000pg/mL	9.38pg/mL	Sandwich
E-EL-R0769c	Rat F XI (Coagulation Factor XI) ELISA Kit	0.16--10ng/mL	0.1ng/mL	Sandwich
E-EL-R0796c	Rat PSA(Prostate Specific Antigen) ELISA Kit	0.16--10ng/mL	0.1ng/mL	Sandwich



Growth Factors

Cat. No.	Product Name	Detection Range	Sensitivity	Test Method
E-EL-H0009c	Human BAFF/CD257(B-Cell Activating Factor) ELISA Kit	62.5--4000pg/mL	37.5pg/mL	Sandwich
E-EL-H0012c	Human BMP-4(Bone Morphogenetic Protein 4) ELISA Kit	31.25--2000pg/mL	18.75pg/mL	Sandwich
E-EL-H0013c	Human BMP-7(Bone Morphogenetic Protein 7) ELISA Kit	31.25--2000pg/mL	18.75pg/mL	Sandwich
E-EL-H0060c	Human EGFR(Epidermal Growth Factor Receptor) ELISA Kit	0.31--20ng/mL	0.19ng/mL	Sandwich
E-EL-H0071c	Human AFGF/FGF1(Acidic Fibroblast Growth Factor 1) ELISA Kit	31.25--2000pg/mL	18.75pg/mL	Sandwich
E-EL-H0074c	Human FGF21(Fibroblast Growth Factor 21) ELISA Kit	31.25--2000pg/mL	18.75pg/mL	Sandwich
E-EL-H0084c	Human HGF(Hepatocyte Growth Factor) ELISA Kit	125--8000pg/mL	75pg/mL	Sandwich
E-EL-H0086c	Human IGF-1(Insulin-like Growth Factor 1) ELISA Kit	1.56--100ng/mL	0.94ng/mL	Sandwich
E-EL-H0087c	Human IGFBP-3(Insulin-like Growth Factor Binding Protein 3) ELISA Kit	0.78--50ng/mL	0.47ng/mL	Sandwich
E-EL-H0092c	Human FGF7/KGF(Fibroblast Growth Factor 7) ELISA Kit	31.25--2000pg/mL	18.75pg/mL	Sandwich
E-EL-H0109c	Human TNF- α (Tumor Necrosis Factor Alpha) ELISA Kit	7.81--500pg/mL	4.69pg/mL	Sandwich
E-EL-H0111c	Human VEGF-A(Vascular Endothelial Cell Growth Factor A) ELISA Kit	31.25--2000pg/mL	18.75pg/mL	Sandwich
E-EL-H0141c	Human PRL(Prolactin) ELISA Kit	1.56--100ng/mL	0.94ng/mL	Sandwich
E-EL-H0175c	Human HCG(Chorionic Gonadotropin) ELISA Kit	7.81--500mIU/mL	4.69mIU/mL	Sandwich
E-EL-H0217c	Human TNFRSF1A(Tumor Necrosis Factor Receptor Superfamily, Member 1A) ELISA Kit	7.81--500pg/mL	4.69pg/mL	Sandwich
E-EL-H0237c	Human AR(Amphiregulin) ELISA Kit	31.25--2000pg/mL	18.75pg/mL	Sandwich
E-EL-H0425c	Human IGF1R(Insulin Like Growth Factor 1 Receptor) ELISA Kit	0.31--20ng/mL	0.19ng/mL	Sandwich
E-EL-H0435c	Human IGF-2(Insulin Like Growth Factor 2) ELISA Kit	0.31--20ng/mL	0.19ng/mL	Sandwich
E-EL-H0442c	Human IGFBP-1(Insulin-like Growth Factor Binding Protein 1) ELISA Kit	0.16--10ng/mL	0.1ng/mL	Sandwich
E-EL-H0443c	Human IGFBP-5(Insulin-like Growth Factor Binding Protein 5) ELISA Kit	1.56--100ng/mL	0.94ng/mL	Sandwich
E-EL-H0444c	Human IGFBP-4(Insulin-like Growth Factor Binding Protein 4) ELISA Kit	3.13--200ng/mL	1.88ng/mL	Sandwich
E-EL-H0446c	Human IGFBP-2(Insulin-like Growth Factor Binding Protein 2) ELISA Kit	0.31--20ng/mL	0.19ng/mL	Sandwich
E-EL-H0450c	Human IGFBP-6(Insulin-like Growth Factor Binding Protein 6) ELISA Kit	0.16--10ng/mL	0.1ng/mL	Sandwich
E-EL-H0483c	Human bFGF/FGF2(Basic Fibroblast Growth Factor) ELISA Kit	125--8000pg/mL	75pg/mL	Sandwich
E-EL-H0552c	Human FGF4(Fibroblast Growth Factor 4) ELISA Kit	62.5--4000pg/mL	37.5pg/mL	Sandwich
E-EL-H0553c	Human FGF6(Fibroblast Growth Factor 6) ELISA Kit	93.75--6000pg/mL	56.25pg/mL	Sandwich
E-EL-H0570c	Human bTC(Betacellulin) ELISA Kit	15.63--1000pg/mL	9.38pg/mL	Sandwich
E-EL-H0748c	Human CD30(Cluster of Differentiation 30) ELISA Kit	0.78--50ng/mL	0.47ng/mL	Sandwich
E-EL-H0932c	Human Smad1/MADH1(Mothers Against Decapentaplegic Homolog 1) ELISA Kit	0.78--50ng/mL	0.47ng/mL	Sandwich
E-EL-H1087c	Human VEGFR1/FLT1(Vascular Endothelial Growth Factor Receptor 1) ELISA Kit	125--8000pg/mL	75pg/mL	Sandwich



Cat. No.	Product Name	Detection Range	Sensitivity	Test Method
E-EL-H1117c	Human FGF9(Fibroblast Growth Factor 9) ELISA Kit	62.5--4000pg/mL	37.5pg/mL	Sandwich
E-EL-H1141c	Human TSH(Thyroid Stimulating Hormone) ELISA Kit	0.16--10ng/mL	0.1ng/mL	Sandwich
E-EL-H1593c	Human TRAIL/TNFSF10(Tumor Necrosis Factor Related Apoptosis Inducing Ligand) ELISA Kit	15.63--1000pg/mL	9.38pg/mL	Sandwich
E-EL-H1600c	Human VEGF-C(Vascular Endothelial Growth Factor C) ELISA Kit	109.38--7000pg/mL	65.63pg/mL	Sandwich
E-EL-H1603c	Human VEGFR-2/KDR(Vascular Endothelial Growth Factor Receptor 2) ELISA Kit	78.13--5000pg/mL	46.88pg/mL	Sandwich
E-EL-H1629c	Human EGFR2(Epidermal Growth Factor Receptor 2) ELISA Kit	125--8000pg/mL	75pg/mL	Sandwich
E-EL-H1643c	Human sTNF-1(Soluble Tumor Necrosis Factor 1) ELISA Kit	15.63--1000pg/mL	9.38pg/mL	Sandwich
E-EL-H2214c	Human PDGFRα(Platelet Derived Growth Factor Receptor Alpha) ELISA Kit	0.16--10ng/mL	0.1ng/mL	Sandwich
E-EL-H2312c	Human TWEAK(Tumour Necrosis Factor Related Weak Inducer of Apoptosis) ELISA Kit	78.13--5000pg/mL	46.88pg/mL	Sandwich
E-EL-H5439c	Human INS(Insulin) ELISA Kit	3.13--200ng/mL	1.88ng/mL	Sandwich
E-EL-M0004c	Mouse BAFF/CD257(B-cell Activating Factor) ELISA Kit	62.5--4000pg/mL	37.5pg/mL	Sandwich
E-EL-M0010c	Mouse TNFRSF1A(Tumor Necrosis Factor Receptor Superfamily, Member 1A) ELISA Kit	15.63--1000pg/mL	9.38pg/mL	Sandwich
E-EL-M0029c	Mouse FGF21(Fibroblast Growth Factor 21) ELISA Kit	31.25--2000pg/mL	18.75pg/mL	Sandwich
E-EL-M0034c	Mouse IGF-1(Insulin-like Growth Factor 1) ELISA Kit	78.13--5000pg/mL	46.88pg/mL	Sandwich
E-EL-M0035c	Mouse IGFBP-3(Insulin-like Growth Factor Binding Protein 3) ELISA Kit	62.5--4000pg/mL	37.5pg/mL	Sandwich
E-EL-M0049c	Mouse TNF-α(Tumor Necrosis Factor Alpha) ELISA Kit	31.25--2000pg/mL	18.75pg/mL	Sandwich
E-EL-M0083c	Mouse PRL(Prolactin) ELISA Kit	0.16--10ng/mL	0.1ng/mL	Sandwich
E-EL-M0170c	Mouse bFGF/FGF2(Basic Fibroblast Growth Factor) ELISA Kit	15.63--1000pg/mL	9.38pg/mL	Sandwich
E-EL-M0171c	Mouse FGF4(Fibroblast Growth Factor 4) ELISA Kit	15.63--1000pg/mL	9.38pg/mL	Sandwich
E-EL-M0172c	Mouse FGF6(Fibroblast Growth Factor 6) ELISA Kit	15.63--1000pg/mL	9.38pg/mL	Sandwich
E-EL-M0181c	Mouse BTC(Betacellulin) ELISA Kit	7.81--500pg/mL	4.69pg/mL	Sandwich
E-EL-M0194c	Mouse BMP-4(Bone Morphogenetic Protein 4) ELISA Kit	31.25--2000pg/mL	18.75pg/mL	Sandwich
E-EL-M0196c	Mouse BMP-7(Bone Morphogenetic Protein 7) ELISA Kit	15.63--1000pg/mL	9.38pg/mL	Sandwich
E-EL-M0285c	Mouse CG(Chorionic Gonadotrophin) ELISA Kit	0.78--50ng/mL	0.47ng/mL	Sandwich
E-EL-M0296c	Mouse CD30(Cluster of differentiation 30) ELISA Kit	46.88--3000pg/mL	28.13pg/mL	Sandwich
E-EL-M0499c	Mouse FGF7/KGF(Fibroblast Growth Factor 7) ELISA Kit	15.63--1000pg/mL	9.38pg/mL	Sandwich
E-EL-M0500c	Mouse FGF9(Fibroblast Growth Factor 9) ELISA Kit	62.5--4000pg/mL	37.5pg/mL	Sandwich
E-EL-M0648c	Mouse FLT1/VEGFR1(Vascular Endothelial Growth Factor Receptor 1) ELISA Kit	0.16--10ng/mL	0.1ng/mL	Sandwich
E-EL-M0649c	Mouse VEGFR-2/KDR(Vascular Endothelial Growth Factor Receptor 2) ELISA Kit	0.16--10ng/mL	0.1ng/mL	Sandwich
E-EL-M0664c	Mouse HGF(Hepatocyte Growth Factor) ELISA Kit	0.16--10ng/mL	0.1ng/mL	Sandwich
E-EL-M0704c	Mouse IGF-2(Insulin Like Growth Factor 2) ELISA Kit	31.25--2000pg/mL	18.75pg/mL	Sandwich
E-EL-M0705c	Mouse IGFBP-1(Insulin-like Growth Factor Binding Protein 1) ELISA Kit	0.16--10ng/mL	0.1ng/mL	Sandwich



Cat. No.	Product Name	Detection Range	Sensitivity	Test Method
E-EL-M0706c	Mouse IGFBP-2(Insulin-like Growth Factor Binding Protein 2) ELISA Kit	0.31--20ng/mL	0.19ng/mL	Sandwich
E-EL-M0707c	Mouse IGFBP-4(Insulin-like Growth Factor Binding Protein 4) ELISA Kit	0.63--40ng/mL	0.38ng/mL	Sandwich
E-EL-M0708c	Mouse IGFBP-6(Insulin-like Growth Factor Binding Protein 6) ELISA Kit	62.5--4000pg/mL	37.5pg/mL	Sandwich
E-EL-M0740c	Mouse AR(Amphiregulin) ELISA Kit	15.63--1000pg/mL	9.38pg/mL	Sandwich
E-EL-M1062c	Mouse Smad1/MADH1(Mothers Against Decapentaplegic Homolog 1) ELISA Kit	0.16--10ng/mL	0.1ng/mL	Sandwich
E-EL-M1153c	Mouse TSH(Thyroid Stimulating Hormone) ELISA Kit	1.25--80ng/mL	0.75ng/mL	Sandwich
E-EL-M1211c	Mouse TRAIL-R1(Tumor Necrosis Factor Related Apoptosis Inducing Ligand 1) ELISA Kit	0.16--10ng/mL	0.1ng/mL	Sandwich
E-EL-M1230c	Mouse VEGF-C(Vascular Endothelial Growth Factor C) ELISA Kit	31.25--2000pg/mL	18.75pg/mL	Sandwich
E-EL-M2614c	Mouse INS(Insulin) ELISA Kit	0.31--20ng/mL	0.19ng/mL	Sandwich
E-EL-MK2264c	Monkey INS(Insulin) ELISA Kit	3.13--200ng/mL	1.88ng/mL	Sandwich
E-EL-R0010c	Rat IGF-1(Insulin-like Growth Factor 1) ELISA Kit	31.25--2000pg/mL	18.75pg/mL	Sandwich
E-EL-R0019c	Rat TNF- α (Tumor Necrosis Factor Alpha) ELISA Kit	78.13--5000pg/mL	46.88pg/mL	Sandwich
E-EL-R0052c	Rat PRL(Prolactin) ELISA Kit	0.78--50ng/mL	0.47ng/mL	Sandwich
E-EL-R0088c	Rat FGF4(Fibroblast Growth Factor 4) ELISA Kit	15.63--1000pg/mL	9.38pg/mL	Sandwich
E-EL-R0089c	Rat FGF6(Fibroblast Growth Factor 6) ELISA Kit	15.63--1000pg/mL	9.38pg/mL	Sandwich
E-EL-R0090c	Rat FGF9(Fibroblast Growth Factor 9) ELISA Kit	62.5--4000pg/mL	37.5pg/mL	Sandwich
E-EL-R0091c	Rat bFGF/FGF2(Basic Fibroblast Growth Factor) ELISA Kit	15.63--1000pg/mL	9.38pg/mL	Sandwich
E-EL-R0101c	Rat BTC(Betacellulin) ELISA Kit	9.38--600pg/mL	5.63pg/mL	Sandwich
E-EL-R0116c	Rat BMP-4(Bone Morphogenetic Protein 4) ELISA Kit	15.63--1000pg/mL	9.38pg/mL	Sandwich
E-EL-R0119c	Rat BMP-7(Bone Morphogenetic Protein 7) ELISA Kit	15.63--1000pg/mL	9.38pg/mL	Sandwich
E-EL-R0216c	Rat CD30(Cluster of differentiation 30) ELISA Kit	1.56--100ng/mL	0.94ng/mL	Sandwich
E-EL-R0307c	Rat FGF7/KGF(Fibroblast Growth Factor 7) ELISA Kit	15.63--1000pg/mL	9.38pg/mL	Sandwich
E-EL-R0421c	Rat G1TR(Glucocorticoid Induced Tumor Necrosis Factor Receptor) ELISA Kit	0.78--50ng/mL	0.47ng/mL	Sandwich
E-EL-R0496c	Rat HGF(Hepatocyte Growth Factor) ELISA Kit	62.5--4000pg/mL	37.5pg/mL	Sandwich
E-EL-R0526c	Rat IGFBP-5(Insulin-like Growth Factor Binding Protein 5) ELISA Kit	78.13--5000pg/mL	46.88pg/mL	Sandwich
E-EL-R0527c	Rat IGFBP-6(Insulin-like Growth Factor Binding Protein 6) ELISA Kit	0.16--10ng/mL	0.1ng/mL	Sandwich
E-EL-R0530c	Rat IGF-2(Insulin Like Growth Factor 2) ELISA Kit	46.88--3000pg/mL	28.13pg/mL	Sandwich
E-EL-R0531c	Rat IGFBP-1(Insulin-like Growth Factor Binding Protein 1) ELISA Kit	31.25--2000pg/mL	18.75pg/mL	Sandwich
E-EL-R0532c	Rat IGFBP-2(Insulin-like Growth Factor Binding Protein 2) ELISA Kit	0.16--10ng/mL	0.1ng/mL	Sandwich
E-EL-R0533c	Rat IGFBP-3(Insulin-Like Growth Factor Binding Protein 3) ELISA Kit	78.13--5000pg/mL	46.88pg/mL	Sandwich
E-EL-R0534c	Rat IGFBP-4(Insulin-like Growth Factor Binding Protein 4) ELISA Kit	0.78--50ng/mL	0.47ng/mL	Sandwich
E-EL-R0574c	Rat AR(Amphiregulin) ELISA Kit	31.25--2000pg/mL	18.75pg/mL	Sandwich



Cat. No.	Product Name	Detection Range	Sensitivity	Test Method
E-EL-R0637c	Rat Smad1/MADH1(Mothers Against Decapentaplegic Homolog 1) ELISA Kit	0.31--20ng/mL	0.19ng/mL	Sandwich
E-EL-R0911c	Rat FLT1/VEGFR1(Vascular Endothelial Growth Factor Receptor 1) ELISA Kit	0.16--10ng/mL	0.1ng/mL	Sandwich
E-EL-R0976c	Rat TSH(Thyroid Stimulating Hormone) ELISA Kit	1.25--80ng/mL	0.75ng/mL	Sandwich
E-EL-R1038c	Rat TRAIL-R1(Tumor Necrosis Factor Related Apoptosis Inducing Ligand 1) ELISA Kit	0.16--10ng/mL	0.1ng/mL	Sandwich
E-EL-R1057c	Rat VEGF-C(Vascular Endothelial Growth Factor C) ELISA Kit	31.25--2000pg/mL	18.75pg/mL	Sandwich
E-EL-R1060c	Rat VEGFR-2/KDR(Vascular Endothelial Growth Factor Receptor 2) ELISA Kit	0.16--10ng/mL	0.1ng/mL	Sandwich
E-EL-R1091c	Rat TNFRSF1A(Tumor Necrosis Factor Receptor Superfamily, Member 1A) ELISA Kit	15.63--1000pg/mL	9.38pg/mL	Sandwich
E-EL-R2386c	Rat EGFR(Epidermal Growth Factor Receptor) ELISA Kit	78.13--5000pg/mL	46.88pg/mL	Sandwich
E-EL-R2396c	Rat BAFF/CD257(B-Cell Activating Factor) ELISA Kit	62.5--4000pg/mL	37.5pg/mL	Sandwich
E-EL-R2407c	Rat AFGF/FGF1(Acidic Fibroblast Growth Factor 1) ELISA Kit	15.63--1000pg/mL	9.38pg/mL	Sandwich
E-EL-R2408c	Rat FGF21(Fibroblast Growth Factor 21) ELISA Kit	31.25--2000pg/mL	18.75pg/mL	Sandwich
E-EL-R2466c	Rat INS(Insulin) ELISA Kit	3.13--200ng/mL	1.88ng/mL	Sandwich

Cancer Metabolism

Cat. No.	Product Name	Detection Range	Sensitivity	Test Method
E-EL-H0002c	Human ACE(Angiotensin I Converting Enzyme) ELISA Kit	0.78--50ng/mL	0.47ng/mL	Sandwich
E-EL-H0004c	Human ADP/Acrp30(Adiponectin) ELISA Kit	0.78--50ng/mL	0.47ng/mL	Sandwich
E-EL-H0006c	Human ANG(Angiogenin) ELISA Kit	15.63--1000pg/mL	9.38pg/mL	Sandwich
E-EL-H0007c	Human ANG1(Angiopietin 1) ELISA Kit	62.5--4000pg/mL	37.5pg/mL	Sandwich
E-EL-H0020c	Human MCP-1(Monocyte Chemotactic Protein 1) ELISA Kit	15.63--1000pg/mL	9.38pg/mL	Sandwich
E-EL-H0056c	Human Cyt-C(Cytochrome C) ELISA Kit	78.13--5000pg/mL	46.88pg/mL	Sandwich
E-EL-H0058c	Human DPP4(Dipeptidyl Peptidase IV) ELISA Kit	0.31--20ng/mL	0.19ng/mL	Sandwich
E-EL-H0064c	Human ET-1(Endothelin 1) ELISA Kit	1.25--80pg/mL	0.75pg/mL	Sandwich
E-EL-H0066c	Human EPO(Erythropoietin) ELISA Kit	31.25--2000pg/mL	18.75pg/mL	Sandwich
E-EL-H0093c	Human LEPR(Leptin Receptor) ELISA Kit	0.31--20ng/mL	0.19ng/mL	Sandwich
E-EL-H0142c	Human MYO(Myoglobin) ELISA Kit	3.13--200ng/mL	1.88ng/mL	Sandwich
E-EL-H0175c	Human HCG(Chorionic Gonadotropin) ELISA Kit	7.81--500mIU/mL	4.69mIU/mL	Sandwich
E-EL-H0464c	Human ApoB(Apolipoprotein B) ELISA Kit	78.13--5000ng/mL	46.88ng/mL	Sandwich
E-EL-H0467c	Human ApoC3(Apolipoprotein C3) ELISA Kit	7.81--500ng/mL	4.69ng/mL	Sandwich
E-EL-H0965c	Human α1-AT(Alpha 1-Antitrypsin) ELISA Kit	3.13--200ng/mL	1.88ng/mL	Sandwich



Cat. No.	Product Name	Detection Range	Sensitivity	Test Method
E-EL-H1087c	Human VEGFR1/FLT1(Vascular Endothelial Growth Factor Receptor 1) ELISA Kit	125--8000pg/mL	75pg/mL	Sandwich
E-EL-H1113c	Human SOD1(Superoxide Dismutase 1, Soluble) ELISA Kit	62.5--4000pg/mL	37.5pg/mL	Competitive
E-EL-H1141c	Human TSH(Thyroid Stimulating Hormone) ELISA Kit	0.16--10ng/mL	0.1ng/mL	Sandwich
E-EL-H1575c	Human PDGF-AA(Platelet Derived Growth Factor AA) ELISA Kit	15.63--1000pg/mL	9.38pg/mL	Sandwich
E-EL-H1606c	Human EMMPRIN/CD147(Extracellular Matrix Metalloproteinase Inducer) ELISA Kit	15.63--1000pg/mL	9.38pg/mL	Sandwich
E-EL-H1817c	Human GPI(Glucose 6 Phosphate Isomerase) ELISA Kit	31.25--2000pg/mL	18.75pg/mL	Sandwich
E-EL-H1818c	Human GCK(Glucokinase) ELISA Kit	0.78--50ng/mL	0.47ng/mL	Sandwich
E-EL-H1964c	Human Anti-MPO(Anti-Myeloperoxidase Antibody) ELISA Kit	3.13--200ng/mL	1.88ng/mL	Sandwich
E-EL-H2172c	Human HO1(Heme Oxygenase 1) ELISA Kit	0.31--20ng/mL	0.19ng/mL	Sandwich
E-EL-H2420c	Human PARP4(Poly ADP Ribose Polymerase 4) ELISA Kit	0.16--10ng/mL	0.1ng/mL	Sandwich
E-EL-M0002c	Mouse ADP/Acrp30(Adiponectin) ELISA Kit	0.31--20ng/mL	0.19ng/mL	Sandwich
E-EL-M0006c	Mouse MCP-1(Monocyte Chemotactic Protein 1) ELISA Kit	15.63--1000pg/mL	9.38pg/mL	Sandwich
E-EL-M0023c	Mouse Cyt-C(Cytochrome C) ELISA Kit	0.39--25ng/mL	0.23ng/mL	Sandwich
E-EL-M0027c	Mouse EPO(Erythropoietin) ELISA Kit	78.13--5000pg/mL	46.88pg/mL	Sandwich
E-EL-M0078c	Mouse ANG(Angiogenin) ELISA Kit	46.88--3000pg/mL	28.13pg/mL	Sandwich
E-EL-M0084c	Mouse MYO(Myoglobin) ELISA Kit	1.56--100ng/mL	0.94ng/mL	Sandwich
E-EL-M0097c	Mouse ANG1(Angiopietin 1) ELISA Kit	0.16--10ng/mL	0.1ng/mL	Sandwich
E-EL-M0132c	Mouse ApoB(Apolipoprotein B) ELISA Kit	31.25--2000ng/mL	18.75ng/mL	Sandwich
E-EL-M0285c	Mouse CG(Chorionic Gonadotrophin) ELISA Kit	0.78--50ng/mL	0.47ng/mL	Sandwich
E-EL-M0457c	Mouse ET-1(Endothelin 1) ELISA Kit	7.81--500pg/mL	4.69pg/mL	Sandwich
E-EL-M0559c	Mouse GCK(Glucokinase) ELISA Kit	0.16--10ng/mL	0.1ng/mL	Sandwich
E-EL-M0565c	Mouse GPI(Glucose 6 Phosphate Isomerase) ELISA Kit	0.31--20ng/mL	0.19ng/mL	Sandwich
E-EL-M0630c	Mouse PDGF-AA(Platelet Derived Growth Factor AA) ELISA Kit	31.25--2000pg/mL	18.75pg/mL	Sandwich
E-EL-M0648c	Mouse FLT1/VEGFR1(Vascular Endothelial Growth Factor Receptor 1) ELISA Kit	0.16--10ng/mL	0.1ng/mL	Sandwich
E-EL-M0651c	Mouse HO1(Heme Oxygenase 1) ELISA Kit	15.63--1000pg/mL	9.38pg/mL	Sandwich
E-EL-M0749c	Mouse LEPR(Leptin Receptor) ELISA Kit	31.25--2000pg/mL	18.75pg/mL	Sandwich
E-EL-M1153c	Mouse TSH(Thyroid Stimulating Hormone) ELISA Kit	1.25--80ng/mL	0.75ng/mL	Sandwich
E-EL-M2398c	Mouse SOD1(Superoxide Dismutase 1, Soluble) ELISA Kit	0.16--10ng/mL	0.1ng/mL	Competitive
E-EL-MK0714c	Monkey EPO(Erythropoietin) ELISA Kit	31.25--2000pg/mL	18.75pg/mL	Sandwich
E-EL-R0006c	Rat Cyt-C(Cytochrome C) ELISA Kit	0.39--25ng/mL	0.23ng/mL	Sandwich
E-EL-R0007c	Rat EPO(Erythropoietin) ELISA Kit	62.5--4000pg/mL	37.5pg/mL	Sandwich
E-EL-R0053c	Rat MYO(Myoglobin) ELISA Kit	0.63--40ng/mL	0.38ng/mL	Sandwich
E-EL-R0167c	Rat ET-1(Endothelin 1) ELISA Kit	7.81--500pg/mL	4.69pg/mL	Sandwich



Cat. No.	Product Name	Detection Range	Sensitivity	Test Method
E-EL-R0329c	Rat ADP/Acrp30(Adiponectin) ELISA Kit	46.88--3000pg/mL	28.13pg/mL	Sandwich
E-EL-R0337c	Rat DPP IV (Dipeptidyl Peptidase IV) ELISA Kit	0.63--40ng/mL	0.38ng/mL	Sandwich
E-EL-R0426c	Rat GCK(Glucokinase) ELISA Kit	0.63--40ng/mL	0.38ng/mL	Sandwich
E-EL-R0488c	Rat HO1(Heme Oxygenase 1) ELISA Kit	0.16--10ng/mL	0.1ng/mL	Sandwich
E-EL-R0625c	Rat ANG(Angiogenin) ELISA Kit	62.5--4000pg/mL	37.5pg/mL	Sandwich
E-EL-R0626c	Rat ANG1(Angiopoietin 1) ELISA Kit	0.16--10ng/mL	0.1ng/mL	Sandwich
E-EL-R0633c	Rat MCP-1(Monocyte Chemotactic Protein 1) ELISA Kit	0.16--10ng/mL	0.1ng/mL	Sandwich
E-EL-R0911c	Rat FLT1/VEGFR1(Vascular Endothelial Growth Factor Receptor 1) ELISA Kit	0.16--10ng/mL	0.1ng/mL	Sandwich
E-EL-R0976c	Rat TSH(Thyroid Stimulating Hormone) ELISA Kit	1.25--80ng/mL	0.75ng/mL	Sandwich
E-EL-R1095c	Rat LEPR(Leptin Receptor) ELISA Kit	31.25--2000pg/mL	18.75pg/mL	Sandwich
E-EL-R1218c	Rat ApoB(Apolipoprotein B) ELISA Kit	31.25--2000ng/mL	18.75ng/mL	Sandwich
E-EL-R1424c	Rat SOD1(Superoxide Dismutase 1, Soluble) ELISA Kit	0.16--10ng/mL	0.1ng/mL	Competitive
E-EL-R2379c	Rat ApoC3(Apolipoprotein C3) ELISA Kit	6.25--400ng/ml	3.75ng/ml	Sandwich
E-EL-R2401c	Rat ACE(Angiotensin I Converting Enzyme) ELISA Kit	0.31--20ng/mL	0.19ng/mL	Sandwich

Signal Transduction

Cat. No.	Product Name	Detection Range	Sensitivity	Test Method
E-EL-H0060c	Human EGFR(Epidermal Growth Factor Receptor) ELISA Kit	0.31--20ng/mL	0.19ng/mL	Sandwich
E-EL-H0082c	Human sgp130(soluble Glycoprotein 130) ELISA Kit	0.25--16ng/mL	0.15ng/mL	Sandwich
E-EL-H0184c	Human TIMP-1(Tissue Inhibitors of Metalloproteinase 1) ELISA Kit	0.16--10ng/mL	0.1ng/mL	Sandwich
E-EL-H0493c	Human AR(Androgen Receptor) ELISA Kit	0.31--20ng/mL	0.19ng/mL	Sandwich
E-EL-H0930c	Human SHH(Hedgehog Homolog, Sonic) ELISA Kit	78.13--5000pg/mL	46.88pg/mL	Sandwich
E-EL-H1133c	Human ER α (Estrogen Receptor Alpha) ELISA Kit	62.5--4000pg/mL	37.5pg/mL	Sandwich
E-EL-H1174c	Human PKB(Protein Kinase B) ELISA Kit	0.16--10ng/mL	0.1ng/mL	Sandwich
E-EL-H1324c	Human Smad3/MADH3(Mothers Against Decapentaplegic Homolog 3) ELISA Kit	0.63--40ng/mL	0.38ng/mL	Sandwich
E-EL-H1629c	Human EGFR2(Epidermal Growth Factor Receptor 2) ELISA Kit	125--8000pg/mL	75pg/mL	Sandwich
E-EL-H2130c	Human STAT1(Signal Transducer and Activator of Transcription 1) ELISA Kit	0.16--10ng/mL	0.1ng/mL	Sandwich
E-EL-H2132c	Human STAT3(Signal Transducer and Activator of Transcription 3) ELISA Kit	0.31--20ng/mL	0.19ng/mL	Sandwich
E-EL-H2271c	Human PGR(Progesterone Receptor) ELISA Kit	0.31--20ng/mL	0.19ng/mL	Sandwich



Cat. No.	Product Name	Detection Range	Sensitivity	Test Method
E-EL-M0476c	Mouse ER α (Estrogen Receptor Alpha) ELISA Kit	0.31--20ng/mL	0.19ng/mL	Sandwich
E-EL-M0509c	Mouse FAK(Focal Adhesion Kinase) ELISA Kit	0.78--50ng/mL	0.47ng/mL	Sandwich
E-EL-M0560c	Mouse gp130(Glucoprotein 130) ELISA Kit	125--8000pg/mL	75pg/mL	Sandwich
E-EL-M0623c	Mouse SHH(Hedgehog Homolog, Sonic) ELISA Kit	15.63--1000pg/mL	9.38pg/mL	Sandwich
E-EL-M0641c	Mouse TIMP-1(Tissue Inhibitors of Metalloproteinase 1) ELISA Kit	0.16--10ng/mL	0.1ng/mL	Sandwich
E-EL-M0944c	Mouse PGR(Progesterone receptor) ELISA Kit	0.16--10ng/mL	0.1ng/mL	Sandwich
E-EL-M0969c	Mouse PIAS1(Protein Inhibitor Of Activated STAT 1) ELISA Kit	0.16--10ng/mL	0.1ng/mL	Sandwich
E-EL-M0972c	Mouse PKB(Protein Kinase B) ELISA Kit	0.78--50ng/mL	0.47ng/mL	Sandwich
E-EL-M1057c	Mouse STAT3(Signal Transducer And Activator Of Transcription 3) ELISA Kit	62.5--4000pg/mL	37.5pg/mL	Sandwich
E-EL-M2648c	Mouse sgp130(Soluble Glucoprotein 130) ELISA Kit	15.63--1000pg/mL	9.38pg/mL	Sandwich
E-EL-R0211c	Rat JNK(C-Jun N-Terminal Kinases) ELISA Kit	7.81--500ng/mL	4.69ng/mL	Sandwich
E-EL-R0484c	Rat SHH(Hedgehog Homolog, Sonic) ELISA Kit	0.16--10ng/mL	0.1ng/mL	Sandwich
E-EL-R0540c	Rat TIMP-1(Tissue Inhibitors of Metalloproteinase 1) ELISA Kit	0.16--10ng/mL	0.1ng/mL	Sandwich
E-EL-R0713c	Rat Smad3/MADH3(Mothers Against Decapentaplegic Homolog 3) ELISA Kit	0.16--10ng/mL	0.1ng/mL	Sandwich
E-EL-R0776c	Rat PGR(Progesterone Receptor) ELISA Kit	0.31--20ng/mL	0.19ng/mL	Sandwich
E-EL-R0807c	Rat PKB(Protein Kinase B) ELISA Kit	3.13--200IU/mL	1.88IU/mL	Sandwich
E-EL-R1226c	Rat STAT3(Signal Transducer and Activator of Transcription 3) ELISA Kit	0.16--10ng/mL	0.1ng/mL	Sandwich
E-EL-R2386c	Rat EGFR(Epidermal Growth Factor Receptor) ELISA Kit	78.13--5000pg/mL	46.88pg/mL	Sandwich

Oncoproteins/Suppressors

Cat. No.	Product Name	Detection Range	Sensitivity	Test Method
E-EL-H0060c	Human EGFR(Epidermal Growth Factor Receptor) ELISA Kit	0.31--20ng/mL	0.19ng/mL	Sandwich
E-EL-H0068c	Human FASL/TNFSF6(Factor Related Apoptosis Ligand) ELISA Kit	15.63--1000pg/mL	9.38pg/mL	Sandwich
E-EL-H0096c	Human NGAL(Neutrophil Gelatinase Associated Lipocalin) ELISA Kit	0.16--10ng/mL	0.1ng/mL	Sandwich
E-EL-H0552c	Human FGF4(Fibroblast Growth Factor 4) ELISA Kit	62.5--4000pg/mL	37.5pg/mL	Sandwich
E-EL-H0553c	Human FGF6(Fibroblast Growth Factor 6) ELISA Kit	93.75--6000pg/mL	56.25pg/mL	Sandwich
E-EL-H0930c	Human SHH(Hedgehog Homolog, Sonic) ELISA Kit	78.13--5000pg/mL	46.88pg/mL	Sandwich
E-EL-H1161c	Human PRDX1(Peroxiredoxin 1) ELISA Kit	15.63--1000pg/mL	9.38pg/mL	Sandwich
E-EL-H1629c	Human EGFR2(Epidermal Growth Factor Receptor 2) ELISA Kit	125--8000pg/mL	75pg/mL	Sandwich



Cat. No.	Product Name	Detection Range	Sensitivity	Test Method
E-EL-H2214c	Human PDGFR α (Platelet Derived Growth Factor Receptor Alpha) ELISA Kit	0.16--10ng/mL	0.1ng/mL	Sandwich
E-EL-M0028c	Mouse FASL/TNFSF6(Factor Related Apoptosis Ligand) ELISA Kit	31.25--2000pg/mL	18.75pg/mL	Sandwich
E-EL-M0118c	Mouse CDKN1A(Cyclin Dependent Kinase Inhibitor 1A) ELISA Kit	0.16--10ng/mL	0.1ng/mL	Sandwich
E-EL-M0171c	Mouse FGF4(Fibroblast Growth Factor 4) ELISA Kit	15.63--1000pg/mL	9.38pg/mL	Sandwich
E-EL-M0172c	Mouse FGF6(Fibroblast Growth Factor 6) ELISA Kit	15.63--1000pg/mL	9.38pg/mL	Sandwich
E-EL-M0623c	Mouse SHH(Hedgehog Homolog, Sonic) ELISA Kit	15.63--1000pg/mL	9.38pg/mL	Sandwich
E-EL-M0828c	Mouse NGAL(Neutrophil Gelatinase Associated Lipocalin) ELISA Kit	39.06--2500pg/mL	23.44pg/mL	Sandwich
E-EL-M1215c	Mouse TP53(Tumor Protein p53) ELISA Kit	62.5--4000pg/mL	37.5pg/mL	Sandwich
E-EL-R0088c	Rat FGF4(Fibroblast Growth Factor 4) ELISA Kit	15.63--1000pg/mL	9.38pg/mL	Sandwich
E-EL-R0089c	Rat FGF6(Fibroblast Growth Factor 6) ELISA Kit	15.63--1000pg/mL	9.38pg/mL	Sandwich
E-EL-R0211c	Rat JNK(C-Jun N-Terminal Kinases) ELISA Kit	7.81--500ng/mL	4.69ng/mL	Sandwich
E-EL-R0310c	Rat CDKN1A(Cyclin Dependent Kinase Inhibitor 1A) ELISA Kit	78.13--5000pg/mL	46.88pg/mL	Sandwich
E-EL-R0484c	Rat SHH(Hedgehog Homolog, Sonic) ELISA Kit	0.16--10ng/mL	0.1ng/mL	Sandwich
E-EL-R0645c	Rat PTEN(Phosphatase and Tensin Homolog) ELISA Kit	0.16--10ng/mL	0.1ng/mL	Sandwich
E-EL-R0662c	Rat NGAL(Neutrophil Gelatinase Associated Lipocalin) ELISA Kit	62.5--4000pg/mL	37.5pg/mL	Sandwich
E-EL-R1042c	Rat TP53(Tumor Protein p53) ELISA Kit	78.13--5000pg/mL	46.88pg/mL	Sandwich
E-EL-R2373c	Rat FASL/TNFSF6(Factor Related Apoptosis Ligand) ELISA Kit	31.25--2000pg/mL	18.75pg/mL	Sandwich
E-EL-R2386c	Rat EGFR(Epidermal Growth Factor Receptor) ELISA Kit	78.13--5000pg/mL	46.88pg/mL	Sandwich

Tumor Biomarkers

Cat. No.	Product Name	Detection Range	Sensitivity	Test Method
E-EL-H0060c	Human EGFR(Epidermal Growth Factor Receptor) ELISA Kit	0.31--20ng/mL	0.19ng/mL	Sandwich
E-EL-H0062c	Human ENG(Endoglin) ELISA Kit	0.16--10ng/mL	0.1ng/mL	Sandwich
E-EL-H0070c	Human α FP(Alpha-Fetoprotein) ELISA Kit	1.56--100ng/mL	0.94ng/mL	Sandwich
E-EL-H0091c	Human PSA(Prostate Specific Antigen) ELISA Kit	0.31--20ng/mL	0.19ng/mL	Sandwich
E-EL-H0112c	Human EREG(Epiregulin) ELISA Kit	15.63--1000pg/mL	9.38pg/mL	Sandwich
E-EL-H0446c	Human IGFBP-2(Insulin-like Growth Factor Binding Protein 2) ELISA Kit	0.31--20ng/mL	0.19ng/mL	Sandwich
E-EL-H0636c	Human CA125(Carbohydrate Antigen 125) ELISA Kit	3.13--200IU/mL	1.88IU/mL	Sandwich
E-EL-H0637c	Human CA19-9(Carbohydrate antigen19-9) ELISA Kit	6.25--400IU/mL	3.75IU/mL	Sandwich



Cat. No.	Product Name	Detection Range	Sensitivity	Test Method
E-EL-H0643c	Human CEA(Carcinoembryonic Antigen) ELISA Kit	0.63--40ng/mL	0.38ng/mL	Sandwich
E-EL-H1058c	Human GAL7(Galectin 7) ELISA Kit	125--8000pg/mL	75pg/mL	Sandwich
E-EL-H1094c	Human VIM(Vimentin) ELISA Kit	7.81--500ng/mL	4.69ng/mL	Sandwich
E-EL-H1260c	Human NNE(Non-Neuronal Enolase) ELISA Kit	0.31--20ng/mL	0.19ng/mL	Sandwich
E-EL-H1270c	Human PARC/CCL18(Pulmonary Activation Regulated Chemokine) ELISA Kit	78.13--5000pg/mL	46.88pg/mL	Sandwich
E-EL-H1347c	Human OPN(Osteopontin) ELISA Kit	0.31--20ng/mL	0.19ng/mL	Sandwich
E-EL-H1446c	Human MMP-3(Matrix Metalloproteinase 3) ELISA Kit	0.16--10ng/mL	0.1ng/mL	Sandwich
E-EL-H1449c	Human MMP-7(Matrix Metalloproteinase 7) ELISA Kit	0.16--10ng/mL	0.1ng/mL	Sandwich
E-EL-H1450c	Human MMP-8(Matrix Metalloproteinase 8) ELISA Kit	0.16--10ng/mL	0.1ng/mL	Sandwich
E-EL-H1451c	Human MMP-9(Matrix Metalloproteinase 9) ELISA Kit	31.25--2000pg/mL	18.75pg/mL	Sandwich
E-EL-H1599c	Human PLAUR/uPAR(Plasminogen Activator, Urokinase Receptor) ELISA Kit	62.5--4000pg/mL	37.5pg/mL	Sandwich
E-EL-H1629c	Human EGFR2(Epidermal Growth Factor Receptor 2) ELISA Kit	125--8000pg/mL	75pg/mL	Sandwich
E-EL-M0232c	Mouse CEA(Carcinoembryonic Antigen) ELISA Kit	62.5--4000pg/mL	37.5pg/mL	Sandwich
E-EL-M0470c	Mouse EPCAM(Epithelial Cell Adhesion Molecule) ELISA Kit	78.13--5000pg/mL	46.88pg/mL	Sandwich
E-EL-M0532c	Mouse GAL7(Galectin 7) ELISA Kit	0.16--10ng/mL	0.1ng/mL	Sandwich
E-EL-M0626c	Mouse MMP-3(Matrix Metalloproteinase 3) ELISA Kit	0.16--10ng/mL	0.1ng/mL	Sandwich
E-EL-M0627c	Mouse MMP-9(Matrix Metalloproteinase-9) ELISA Kit	78.13--5000pg/mL	46.88pg/mL	Sandwich
E-EL-M0629c	Mouse OPN(Osteopontin) ELISA Kit	39.06--2500pg/mL	23.44pg/mL	Sandwich
E-EL-M0706c	Mouse IGFBP-2(Insulin-like Growth Factor Binding Protein 2) ELISA Kit	0.31--20ng/mL	0.19ng/mL	Sandwich
E-EL-M0783c	Mouse MMP-7(Matrix Metalloproteinase 7) ELISA Kit	62.5--4000pg/mL	37.5pg/mL	Sandwich
E-EL-M0784c	Mouse MMP-8(Matrix Metalloproteinase 8) ELISA Kit	0.31--20ng/mL	0.19ng/mL	Sandwich
E-EL-M0870c	Mouse CA125(Carbohydrate Antigen 125) ELISA Kit	3.13--200IU/mL	1.88IU/mL	Sandwich
E-EL-M0961c	Mouse PSA(Prostate Specific Antigen) ELISA Kit	0.16--10ng/mL	0.1ng/mL	Sandwich
E-EL-M0991c	Mouse PARC/CCL18(Pulmonary Activation Regulated Chemokine) ELISA Kit	78.13--5000pg/mL	46.88pg/mL	Sandwich
E-EL-M1072c	Mouse ENG(Endoglin) ELISA Kit	62.5--4000pg/mL	37.5pg/mL	Sandwich
E-EL-M1274c	Mouse PLAUR/uPAR(Plasminogen Activator, Urokinase Receptor) ELISA Kit	78.13--5000pg/mL	46.88pg/mL	Sandwich
E-EL-M2405c	Mouse αFP(Alpha-Fetoprotein) ELISA Kit	0.16--10ng/mL	0.1ng/mL	Sandwich
E-EL-R0150c	Rat CEA(Carcinoembryonic Antigen) ELISA Kit	0.16--10ng/mL	0.1ng/mL	Sandwich
E-EL-R0153c	Rat αFP(Alpha-Fetoprotein) ELISA Kit	0.31--20ng/mL	0.19ng/mL	Sandwich
E-EL-R0532c	Rat IGFBP-2(Insulin-like Growth Factor Binding Protein 2) ELISA Kit	0.16--10ng/mL	0.1ng/mL	Sandwich
E-EL-R0619c	Rat MMP-3(Matrix Metalloproteinase 3) ELISA Kit	0.16--10ng/mL	0.1ng/mL	Sandwich
E-EL-R0622c	Rat MMP-7(Matrix Metalloproteinase 7) ELISA Kit	0.16--10ng/mL	0.1ng/mL	Sandwich
E-EL-R0623c	Rat MMP-8(Matrix Metalloproteinase 8) ELISA Kit	78.13--5000pg/mL	46.88pg/mL	Sandwich



Cat. No.	Product Name	Detection Range	Sensitivity	Test Method
E-EL-R0624c	Rat MMP-9(Matrix Metalloproteinase 9) ELISA Kit	0.78--50ng/mL	0.47ng/mL	Sandwich
E-EL-R0702c	Rat OPN(Osteopontin) ELISA Kit	1.56--100ng/mL	0.94ng/mL	Sandwich
E-EL-R0707c	Rat CA125(Carbohydrate Antigen 125) ELISA Kit	7.81--500IU/mL	4.69IU/mL	Sandwich
E-EL-R0769c	Rat F XI (Coagulation Factor XI) ELISA Kit	0.16--10ng/mL	0.1ng/mL	Sandwich
E-EL-R0796c	Rat PSA(Prostate Specific Antigen) ELISA Kit	0.16--10ng/mL	0.1ng/mL	Sandwich
E-EL-R1055c	Rat PLAUR/uPAR(Plasminogen Activator, Urokinase Receptor) ELISA Kit	78.13--5000pg/mL	46.88pg/mL	Sandwich
E-EL-R2386c	Rat EGFR(Epidermal Growth Factor Receptor) ELISA Kit	78.13--5000pg/mL	46.88pg/mL	Sandwich
E-EL-R2403c	Rat NNE(Non-Neuronal Enolase) ELISA Kit	0.31--20ng/mL	0.19ng/mL	Sandwich
E-EL-R2539c	Rat CA19-9(Carbohydrate antigen19-9) ELISA Kit	1.56--100IU/mL	0.94IU/mL	Sandwich

Cell Death

Cat. No.	Product Name	Detection Range	Sensitivity	Test Method
E-EL-H0479c	Human AIF(Apoptosis Inducing Factor) ELISA Kit	0.16--10ng/mL	0.1ng/mL	Sandwich
E-EL-H1174c	Human PKB(Protein Kinase B) ELISA Kit	0.16--10ng/mL	0.1ng/mL	Sandwich
E-EL-H0422c	Human ANXA5(Annexin A5) ELISA Kit	0.31--20ng/mL	0.19ng/mL	Sandwich
E-EL-H0562c	Human BAX(Bcl-2 Associated X Protein) ELISA Kit	0.78--50ng/mL	0.47ng/mL	Sandwich
E-EL-H0671c	Human CTSL(Cathepsin L) ELISA Kit	62.5--4000pg/mL	37.5pg/mL	Sandwich
E-EL-H0034c	Human FcεR II /CD23(Receptor II for the Fc Region of Immunoglobulin E) ELISA Kit	31.25--2000pg/mL	18.75pg/mL	Sandwich
E-EL-H0056c	Human Cyt-C(Cytochrome C) ELISA Kit	78.13--5000pg/mL	46.88pg/mL	Sandwich
E-EL-H2086c	Human ERK1(Extracellular Signal Regulated Kinase 1) ELISA Kit	0.31--20ng/mL	0.19ng/mL	Sandwich
E-EL-H1051c	Human GAL1(Galectin 1) ELISA Kit	0.78--50ng/mL	0.47ng/mL	Sandwich
E-EL-H1058c	Human GAL7(Galectin 7) ELISA Kit	125--8000pg/mL	75pg/mL	Sandwich
E-EL-H5200c	Human LTF/LF(Lactoferrin) ELISA Kit	0.31--20ng/mL	0.19ng/mL	Sandwich
E-EL-H1584c	Human Surv(Survivin) ELISA Kit	31.25--2000pg/mL	18.75pg/mL	Sandwich
E-EL-H2305c	Human TACE(TNF α Converting Enzyme) ELISA Kit	62.5--4000pg/mL	37.5pg/mL	Sandwich
E-EL-H1593c	Human TRAIL/TNFSF10(Tumor Necrosis Factor Related Apoptosis Inducing Ligand) ELISA Kit	15.63--1000pg/mL	9.38pg/mL	Sandwich
E-EL-M0141c	Mouse AIF(Apoptosis Inducing Factor) ELISA Kit	7.81--500pg/mL	4.69pg/mL	Sandwich
E-EL-M0972c	Mouse PKB(Protein Kinase B) ELISA Kit	0.78--50ng/mL	0.47ng/mL	Sandwich
E-EL-M0099c	Mouse ANXA5(Annexin A5) ELISA Kit	0.16--10ng/mL	0.1ng/mL	Sandwich



Cat. No.	Product Name	Detection Range	Sensitivity	Test Method
E-EL-M0178c	Mouse Bax(Bcl-2 Associated X Protein) ELISA Kit	0.16--10ng/mL	0.1ng/mL	Sandwich
E-EL-M0251c	Mouse CTSL(Cathepsin L) ELISA Kit	31.25--2000pg/mL	18.75pg/mL	Sandwich
E-EL-M0023c	Mouse Cyt-C(Cytochrome C) ELISA Kit	0.39--25ng/mL	0.23ng/mL	Sandwich
E-EL-M0480c	Mouse ERK1(Extracellular Signal Regulated Kinase 1) ELISA Kit	78.13--5000pg/mL	46.88pg/mL	Sandwich
E-EL-M0481c	Mouse ERK2(Extracellular Signal Regulated Kinase 2) ELISA Kit	0.31--20ng/mL	0.19ng/mL	Sandwich
E-EL-M0746c	Mouse LTF/LF(Lactoferrin) ELISA Kit	62.5--4000pg/mL	37.5pg/mL	Sandwich
E-EL-M1215c	Mouse TP53(Tumor Protein p53) ELISA Kit	62.5--4000pg/mL	37.5pg/mL	Sandwich
E-EL-M1084c	Mouse TRAIL/TNFSF10(Tumor Necrosis Factor Related Apoptosis Inducing Ligand) ELISA Kit	15.63--1000pg/mL	9.38pg/mL	Sandwich
E-EL-R0807c	Rat PKB(Protein Kinase B) ELISA Kit	3.13--200IU/mL	1.88IU/mL	Sandwich
E-EL-R0098c	Rat BAX(BCL-2 Associated X Protein) ELISA Kit	0.16--10ng/mL	0.1ng/mL	Sandwich
E-EL-R0173c	Rat CTSL(Cathepsin L) ELISA Kit	0.63--40ng/mL	0.38ng/mL	Sandwich
E-EL-R0006c	Rat Cyt-C(Cytochrome C) ELISA Kit	0.39--25ng/mL	0.23ng/mL	Sandwich
E-EL-R0372c	Rat ERK1(Extracellular Signal Regulated Kinase 1) ELISA Kit	0.31--20ng/mL	0.19ng/mL	Sandwich
E-EL-R0577c	Rat LTF/LF(Lactoferrin) ELISA Kit	31.25--2000pg/mL	18.75pg/mL	Sandwich
E-EL-R1042c	Rat TP53(Tumor Protein p53) ELISA Kit	78.13--5000pg/mL	46.88pg/mL	Sandwich
E-EL-R1041c	Rat TRAIL/TNFSF10(Tumor Necrosis Factor Related Apoptosis Inducing Ligand) ELISA Kit	15.63--1000pg/mL	9.38pg/mL	Sandwich
E-EL-R1080c	Rat XIAP(X-Linked Inhibitor Of Apoptosis Protein) ELISA Kit	0.16--10ng/mL	0.1ng/mL	Sandwich
E-EL-H0059c	Human EGF(Epidermal Growth Factor) ELISA Kit	3.91--250pg/mL	2.35pg/mL	Sandwich
E-EL-H0094c	Human LIF(Leukemia Inhibitory Factor) ELISA Kit	31.25--2000pg/mL	18.75pg/mL	Sandwich
E-EL-H0513c	Human MAPK14(Mitogen Activated Protein Kinase 14) ELISA Kit	1.56--100ng/mL	0.94ng/mL	Sandwich
E-EL-H1205c	Human NGF(Nerve Growth Factor) ELISA Kit	15.63--1000pg/mL	9.38pg/mL	Sandwich
E-EL-H1260c	Human NNE(Non-Neuronal Enolase) ELISA Kit	0.31--20ng/mL	0.19ng/mL	Sandwich
E-EL-H1575c	Human PDGF-AA(Platelet Derived Growth Factor AA) ELISA Kit	15.63--1000pg/mL	9.38pg/mL	Sandwich
E-EL-H1576c	Human PDGF-AB(Platelet Derived Growth Factor AB) ELISA Kit	31.25--2000pg/mL	18.75pg/mL	Sandwich
E-EL-H1655c	Human mTOR(Mammalian Target of Rapamycin) ELISA Kit	0.16--10ng/mL	0.1ng/mL	Sandwich
E-EL-H2087c	Human ERK2(Extracellular Signal Regulated Kinase 2) ELISA Kit	46.88--3000pg/mL	28.13pg/mL	Sandwich
E-EL-H5022c	Human IL-11(Interleukin 11) ELISA Kit	31.25--2000pg/mL	18.75pg/mL	Sandwich
E-EL-M0025c	Mouse EGF(Epidermal Growth Factor) ELISA Kit	15.63--1000pg/mL	9.38pg/mL	Sandwich
E-EL-M0040c	Mouse LIF(Leukemia Inhibitory Factor) ELISA Kit	15.63--1000pg/mL	9.38pg/mL	Sandwich
E-EL-M0630c	Mouse PDGF-AA(Platelet Derived Growth Factor AA) ELISA Kit	31.25--2000pg/mL	18.75pg/mL	Sandwich
E-EL-M0631c	Mouse PDGF-AB(Platelet Derived Growth Factor AB) ELISA Kit	15.63--1000pg/mL	9.38pg/mL	Sandwich
E-EL-M0725c	Mouse IL-11(Interleukin 11) ELISA Kit	15.63--1000pg/mL	9.38pg/mL	Sandwich
E-EL-M0815c	Mouse NGF(Nerve growth factor) ELISA Kit	31.25--2000pg/mL	18.75pg/mL	Sandwich



Cat. No.	Product Name	Detection Range	Sensitivity	Test Method
E-EL-R0211c	Rat JNK(C-Jun N-Terminal Kinases) ELISA Kit	7.81--500ng/mL	4.69ng/mL	Sandwich
E-EL-R0216c	Rat CD30(Cluster of differentiation 30) ELISA Kit	1.56--100ng/mL	0.94ng/mL	Sandwich
E-EL-R0369c	Rat EGF(Epidermal Growth Factor) ELISA Kit	15.63--1000pg/mL	9.38pg/mL	Sandwich
E-EL-R0536c	Rat PDGF-AB(Platelet Derived Growth Factor AB) ELISA Kit	7.81--500pg/mL	4.69pg/mL	Sandwich
E-EL-R0562c	Rat IL-11(Interleukin 11) ELISA Kit	15.63--1000pg/mL	9.38pg/mL	Sandwich
E-EL-R0585c	Rat LIF(Leukemia Inhibitory Factor) ELISA Kit	15.63--1000pg/mL	9.38pg/mL	Sandwich
E-EL-R0645c	Rat PTEN(Phosphatase and Tensin Homolog) ELISA Kit	0.16--10ng/mL	0.1ng/mL	Sandwich
E-EL-R0652c	Rat NGF(Nerve Growth Factor) ELISA Kit	39.06--2500pg/mL	23.44pg/mL	Sandwich
E-EL-R0711c	Rat MAPK14(Mitogen Activated Protein Kinase 14) ELISA Kit	1.25--80ng/mL	0.75ng/mL	Sandwich
E-EL-R2403c	Rat NNE(Non-Neuronal Enolase) ELISA Kit	0.31--20ng/mL	0.19ng/mL	Sandwich
E-EL-R2528c	Rat ERK2(Extracellular Signal Regulated Kinase 2) ELISA Kit	0.78--50ng/mL	0.47ng/mL	Sandwich
E-EL-R2529c	Rat ERK1/2(Extracellular Signal Regulated Kinase 1/2) ELISA Kit	0.78--50ng/mL	0.47ng/mL	Sandwich

Cancer Biomarker Panels

Cat. No.	Product Name	Detection Range	Sensitivity	Test Method
E-EL-H0616c	Human MUC1(Mucin 1) ELISA Kit	0.16--10ng/mL	0.1ng/mL	Sandwich
E-EL-H0636c	Human CA125(Carbohydrate Antigen 125) ELISA Kit	3.13--200IU/mL	1.88IU/mL	Sandwich
E-EL-H0637c	Human CA19-9(Carbohydrate antigen19-9) ELISA Kit	6.25--400IU/mL	3.75IU/mL	Sandwich
E-EL-H1260c	Human NNE(Non-Neuronal Enolase) ELISA Kit	0.31--20ng/mL	0.19ng/mL	Sandwich
E-EL-M0870c	Mouse CA125(Carbohydrate Antigen 125) ELISA Kit	3.13--200IU/mL	1.88IU/mL	Sandwich
E-EL-R0707c	Rat CA125(Carbohydrate Antigen 125) ELISA Kit	7.81--500IU/mL	4.69IU/mL	Sandwich
E-EL-R2403c	Rat NNE(Non-Neuronal Enolase) ELISA Kit	0.31--20ng/mL	0.19ng/mL	Sandwich
E-EL-R2539c	Rat CA19-9(Carbohydrate antigen19-9) ELISA Kit	1.56--100IU/mL	0.94IU/mL	Sandwich



Featured Publications

Cat. No.	Targets	Species	Publications	IF
E-EL-M0037c E-EL-M0044c	IL-1 β IL-6	Mouse	Hu M, Luo Q, Alitongbieke G, et al. Celastrol-Induced Nur77 Interaction With TRAF2 Alleviates Inflammation By Promoting Mitochondrial Ubiquitination And Autophagy[J]. <i>Molecular Cell</i> , 2017, 66(1): 141-153.	14.714
E-EL-H0109c E-EL-H0102c E-EL-H0088c	TNF- α IL-6 IL-1 α	Human	Chen W H, Luo G F, Lei Q, et al. Overcoming The Heat Endurance Of Tumor Cells By Interfering The Anaerobic Glycolysis Metabolism For Improved Photothermal Therapy[J]. <i>ACS Nano</i> , 2017, 11(2): 1419-1431.	13.942
E-EL-H0637c	CA19-9	Human	Yamada D, Rizvi S, Razumilava N, et al. IL-33 Facilitates Oncogene-Induced Cholangiocarcinoma In Mice By An Interleukin-6-Sensitive Mechanism[J]. <i>Hepatology</i> , 2015, 61(5): 1627-1642.	13.246
E-EL-R0014c E-EL-R0016c E-EL-R0022c	IL-4 IL-10 CRP	Rat	Barquilla P C, Pagano E S, Jiménez-Ortega V, et al. Melatonin Normalizes Clinical And Biochemical Parameters Of Mild Inflammation In Diet-Induced Metabolic Syndrome In Rats[J]. <i>Journal of Pineal Research</i> , 2014, 57(3): 280-90.	10.391
E-EL-R0624c E-EL-R0618c	MMP-9 MMP-2	Rat	Liu Y, Zhong G, Zhao Z. Effect Of Chronic Left Ventricular Unloading On Myocardial Remodeling: Multimodal Assessment Of Two Heterotopic Heart Transplantation Techniques[J]. <i>Journal of Heart and Lung Transplantation</i> , 2014, 34(4): 594-603.	7.114
E-EL-M0135c E-EL-M0132c E-EL-M0130c	ApoE ApoB ApoA1	Mouse	Sun L, Yang X, Li Q, et al. Activation Of Adiponectin Receptor Regulates Proprotein Convertase Subtilisin/Kexin Type 9 Expression And Inhibits Lesions In ApoE-Deficient Mice[J]. <i>Arteriosclerosis Thrombosis and Vascular Biology</i> , 2017.	6.607
E-EL-H1586c	TGF- α	Human	Chen Y, Bai X, Qi Z, et al. The Hepatitis B Virus X Protein Promotes Pancreatic Cancer Through Modulation Of The PI3K/AKT Signaling Pathway[J]. <i>Cancer Letters</i> , 2016, 380(1): 98-105.	6.375
E-EL-R0019c	TNF- α	Rat	Ahmed L A, Darwish H A, Abdelsalam R M, et al. Role Of Rho Kinase Inhibition In The Protective Effect Of Fasudil And Simvastatin Against 3-Nitropropionic Acid-Induced Striatal Neurodegeneration And Mitochondrial Dysfunction In Rats[J]. <i>Molecular Neurobiology</i> , 2015.	6.19
E-EL-R0019c	TNF- α	Rat	Kandil E A, Sayed R H, Ahmed L A, et al. Modulatory Role Of Nurr1 Activation And Thrombin Inhibition In The Neuroprotective Effects Of Dabigatran Etexilate In Rotenone-Induced Parkinson'S Disease In Rats[J]. <i>Molecular Neurobiology</i> , 2017.	6.19
E-EL-H0649c E-EL-H0149c E-EL-H0753c E-EL-H0017c	cTn-I/TNNI3 IL-1 β NOS2/iNOS CASP3	Human	Dwaich K H, Alamran F G, Alsheibani B I, et al. Melatonin Effects On Myocardial Ischemia-Reperfusion Injury: Impact On The Outcome In Patients Undergoing Coronary Artery Bypass Grafting Surgery[J]. <i>International Journal of Cardiology</i> , 2016, 221: 977-986.	6.189
E-EL-H0108c E-EL-H0101c	IFN- γ IL-4	Human	Xia G, Xin S, Zheng X, et al. Decreased Expression Of Programmed Death 1 On Peripheral Blood Lymphocytes Disrupts Immune Homeostasis In Peripartum Cardiomyopathy[J]. <i>International Journal of Cardiology</i> , 2016, 223: 842-847.	6.189
E-EL-R0019c E-EL-R0009c E-EL-R0012c	TNF- α IFN- γ IL-1 β	Rat	Fettucciari K, Ponsini P, Gioè D, et al. Enteric Glial Cells Are Susceptible To Clostridium Difficile Toxin B[J]. <i>Cellular and Molecular Life Sciences</i> , 2016.	5.788
E-EL-R0019c E-EL-R0012c E-EL-R0015c	TNF- α IL-1 β IL-6	Rat	Hang Z, Meng Z, Zhou F, et al. Cinnamaldehyde Ameliorates LPS-Induced Cardiac Dysfunction Via TLR4-NOX4 Pathway: The Regulation Of Autophagy And ROS Production[J]. <i>Journal of Molecular and Cellular Cardiology</i> , 2016, 101: 11-24.	5.68
E-EL-H1451c E-EL-H2340c	MMP-9 4-HNE	Human	Wang D, Ma Y, Yang X, et al. Hypermethylation Of The Keap1 Gene Inactivates Its Function, Promotes Nrf2 Nuclear Accumulation, And Is Involved In Arsenite-Induced Human Keratinocyte Transformation[J]. <i>Free Radical Biology and Medicine</i> , 2015, 89: 209-219.	5.606
E-EL-R0911c	FLT1/VEGFR1	Rat	Ushida T, Kotani T, Tsuda H, et al. Molecular Hydrogen Ameliorates Several Characteristics Of Preeclampsia In The Reduced Uterine Perfusion Pressure (Rupp) Rat Model[J]. <i>Free Radical Biology & Medicine</i> , 2016.	5.606



Cat. No.	Targets	Species	Publications	IF
E-EL-M0037c	IL-1 β	Mouse	Wang X, Gao Y, Song J, et al. The TIR/BB-Loop Mimetic AS-1 Prevents Non-Alcoholic Steatohepatitis And Hepatic Insulin Resistance By Inhibiting NLRP3-ASC Inflammasome Activation[J]. British Journal of Pharmacology, 2017.	5.491
E-EL-M0049c E-EL-M0037c	TNF- α IL-1 β	Mouse	Min F, Song J, He Y, et al. The TIR/BB-Loop Mimetic AS-1 Attenuates Mechanical Stress-Induced Cardiac Fibroblast Activation And Paracrine Secretion Via Modulation Of Large Tumor Suppressor Kinase 1[J]. Biochimica Et Biophysica Acta-Molecular Basis Of Disease, 2016, 1862: 1191-1202.	5.476
E-EL-M0037c E-EL-M0730c E-EL-M0077c E-EL-M0647c	IL-1 β IL-18 sICAM-1/CD54 sVCAM-1/CD106	Mouse	Zhang J L, Xia L Y, Zhang F, et al. A Novel Mechanism Of Diabetic Vascular Endothelial Dysfunction: Hypoadiponectinemia-Induced NLRP3 Inflammasome Activation[J]. Biochimica Et Biophysica Acta-Molecular Basis of Disease, 2017.	5.476
E-EL-H1441c	MMP-1	Human	Liu B, Yi M, Tang Y, et al. MMP-1 Promoter Polymorphism Is Associated With Risk Of Radiation-Induced Lung Injury In Lung Cancer Patients Treated With Radiotherapy[J]. Oncotarget, 2016.	5.168
E-EL-R0026c E-EL-R0391c E-EL-0072c E-EL-0065c	LH FSH T E2	Rat	Cui X R, Long C L, Tian J, et al. Protective Effects Of Fluvastatin On Reproductive Function In Obese Male Rats Induced By High-Fat Diet Through Enhanced Signaling Of mTOR[J]. Cellular Physiology and Biochemistry, 2017, 41: 598-608.	5.104
E-EL-R0012c E-EL-R0015c E-EL-R0019c	IL-1 β IL-6 TNF- α	Rat	Liu H, Yang M, Pan L, et al. Hyperbaric Oxygen Intervention Modulates Early Brain Injury After Experimental Subarachnoid Hemorrhage In Rats: Possible Involvement Of TLR4/NF- κ B-Mediated Signaling Pathway[J]. Cellular Physiology and Biochemistry, 2016, 38(6): 2323-2336.	5.104
E-EL-H0109c E-EL-H0102c E-EL-H0103c	TNF- α IL-6 IL-10	Human	Zhao Y, Jiang C, He J, et al. Multifunctional Dextran Sulfate-Coated Reconstituted High Density Lipoproteins Target Macrophages And Promote Beneficial Antiatherosclerotic Mechanisms[J]. Bioconjugate Chemistry, 2016.	4.818
E-EL-M0049c E-EL-M0048c E-EL-M0042c E-EL-M0044c	TNF- α IFN- γ IL-2 IL-6	Mouse	Wang J, Ge B, Li Z, et al. Structural Analysis And Immunoregulation Activity Comparison Of Five Polysaccharides From Angelica Sinensis[J]. Carbohydrate Polymers, 2016, 140: 6-12.	4.811
E-EL-H1919c E-EL-H0654c E-EL-H0835c E-EL-H0836c E-EL-H0183c E-EL-H1446c E-EL-H0132c E-EL-H0134c	GHRL COMP CTX I NTX I P III NP MMP-3 MMP-10 MMP-13	Human	Wu J, Wang K, Xu J, et al. Associations Between Serum Ghrelin And Knee Symptoms, Joint Structures And Cartilage Or Bone Biomarkers In Patients With Knee Osteoarthritis[J]. Osteoarthritis and Cartilage, 2017.	4.742
E-EL-H1205c	NGF	Human	Li R, Wu J, Lin Z, et al. Single Injection Of A Novel Nerve Growth Factor Coacervate Improves Structural And Functional Regeneration After Sciatic Nerve Injury In Adult Rats[J]. Experimental Neurology, 2017, 288: 1-10.	4.706
E-EL-R0026c	LH	Rat	Gaspar R S, Benevides R O, Fontelles J L, et al. Reproductive Alterations In Hyperinsulinemic But Normoandrogenic MSG-Obese Female Rats[J]. Journal of Endocrinology, 2016, 229(2): 61-72.	4.706
E-EL-H0109c E-EL-H0150c E-EL-H0149c	TNF- α IL-12 IL-1 β	Human	Jiang Y, Kou J, Han X, et al. Ros-Dependent Activation Of Autophagy Through The PI3K/Akt/mTOR Pathway Is Induced By Hydroxysafflor Yellow A-Sonodynamic Therapy In THP-1 Macrophages[J]. Oxidative Medicine and Cellular Longevity, 2017.	4.593
E-EL-R0012c E-EL-R0567c	IL-1 β IL-18	Rat	Xiao Y D, Huang Y Y, Wang H X, et al. Thioredoxin-Interacting Protein Mediates NLRP3 Inflammasome Activation Involved In The Susceptibility To Ischemic Acute Kidney Injury In Diabetes[J]. Oxidative Medicine and Cellular Longevity, 2016.	4.593



Cat. No.	Targets	Species	Publications	IF
E-EL-R0012c E-EL-R0015c E-EL-R0019c	IL-1β IL-6 TNF-α	Rat	Zeng Z, Chen Z, Xu S, et al. Polydatin Alleviates Small Intestine Injury During Hemorrhagic Shock As A Sirt1 Activator[J]. <i>Oxidative Medicine & Cellular Longevity</i> , 2015.	4.593
E-EL-H0427c E-EL-H0148c E-EL-H1642c E-EL-H0058c	IAA GLP-1 ApoB48 DPP4	Human	Carnevale R, Loffredo L, Ben M D, et al. Extra Virgin Olive Oil Improves Post-Prandial Glycemic And Lipid Profile In Patients With Impaired Fasting Glucose[J]. <i>Clinical Nutrition</i> , 2016.	4.548
E-EL-M1272c E-EL-M0160c	ALT AST	Mouse	Wu T, Qi X, Liu Y, et al. Dietary Supplementation With Purified Mulberry (Morus Australis, Poir) Anthocyanins Suppresses Body Weight Gain In High-Fat Diet Fed C57Bl/6 Mice[J]. <i>Food Chemistry</i> , 2013, 141(1): 482-487.	4.529
E-EL-M0049c E-EL-M0037c E-EL-M0044c E-EL-M0007c	TNF-α IL-1β IL-6 MIP-1α	Mouse	Yan Q, Xiang Y, Shuyu W, et al. PGC-1α Silencing Compounds The Perturbation Of Mitochondrial Function Caused By Mutant SOD1 In Skeletal Muscle Of ALS Mouse Model[J]. <i>Frontiers in Aging Neuroscience</i> , 2015.	4.504
E-EL-H1298c	SDC1	Human	Zhang Y, Wang Z, Liu J, et al. Cell Surface-Anchored Syndecan-1 Ameliorates Intestinal Inflammation And Neutrophil Transmigration In Ulcerative Colitis[J]. <i>Journal of Cellular and Molecular Medicine</i> , 2017, 21(1): 13-25.	4.499
E-EL-H0109c	TNF-α	Human	Zhang X P, Shang W L, Yuan J Z, et al. Positive Feedback Cycle Of TNF-α Promotes Staphylococcal Enterotoxin B-Induced THP-1 Cell Apoptosis[J]. <i>Frontier in Cellular and Infection Microbiology</i> , 2016.	4.3
E-EL-M0044c E-EL-M0049c	IL-6 TNF-α	Mouse	Wan G, Lingao R, Yu Y, et al. Effects Of Silver Nanoparticles In Combination With Antibiotics On The Resistant Bacteria Acinetobacter Baumannii[J]. <i>International Journal of Nanomedicine</i> , 2016, 11: 3789-3800.	4.3
E-EL-H0048c E-EL-H0109c E-EL-H2172c E-EL-H1640c E-EL-R0580c E-EL-R0504c E-EL-R0019c E-EL-R0488c E-EL-R0902c	IL-8 TNF-α HO1 PECAM1/CD31 LRP-1 HDL TNF-α HO1 sPECAM-1	Human &Rat	Yan Z, Wang W, Wu Y, et al. Zinc Oxide Nanoparticle-Induced Atherosclerotic Alterations In Vitro And In Vivo[J]. <i>International Journal of Nanomedicine</i> , 2017, 12: 4433-4442.	4.3
E-EL-H0109c E-EL-H0481c E-EL-H0661c	TNF-α APAF1 CASP7	Human	Tang Y, Zhang Y C, Chen Y, et al. The Role Of miR-19b In The Inhibition Of Endothelial Cell Apoptosis And Its Relationship With Coronary Artery Disease[J]. <i>Scientific Reports</i> , 2015.	4.259
E-EL-R2466c E-EL-0047c	INS NA/NE	Rat	He J L, Zhao M, Xia J J, et al. FGF21 Ameliorates The Neurocontrol Of Blood Pressure In The High Fructose-Drinking Rats[J]. <i>Scientific Reports</i> , 2016.	4.259
E-EL-R0633c E-EL-R0019c E-EL-R0015c E-EL-R0016c	MCP-1 TNF-α IL-6 IL-10	Rat	Wu D, Luo N, Wang L, et al. Hydrogen Sulfide Ameliorates Chronic Renal Failure In Rats By Inhibiting Apoptosis And Inflammation Through ROS/MAPK And NF-κB Signaling Pathways[J]. <i>Scientific Reports</i> , 2017.	4.259
E-EL-R0167c E-EL-R0046c E-EL-R1061c	ET-1 sICAM-1/CD54 VCAM-1/CD106	Rat	Zhang K, Wang D, Jiang Z, et al. Endothelial Dysfunction Correlates With Decompression Bubbles In Rats[J]. <i>Scientific Reports</i> , 2016.	4.259
E-EL-M2614c	INS	Mouse	Ji J, Qin Y, Ren J, et al. Mitochondria-Related miR-141-3p Contributes To Mitochondrial Dysfunction In HFD-Induced Obesity By Inhibiting PTEN[J]. <i>Scientific Reports</i> , 2015.	4.259
E-EL-M0042c E-EL-M0043c E-EL-M0727c E-EL-M0048c E-EL-M0691c	IL-2 IL-4 IL-13 IFN-γ IgE	Mouse	Li K, Zhang Y, Liang K Y, et al. Rheb1 Deletion In Myeloid Cells Aggravates OVA-Induced Allergic Inflammation In Mice[J]. <i>Scientific Reports</i> , 2017.	4.259



Cat. No.	Targets	Species	Publications	IF
E-EL-M0037c E-EL-M0044c E-EL-M0726c E-EL-M0049c	IL-1 β IL-6 IL-12 TNF- α	Mouse	Aipire A, Li J, Yuan P, et al. Glycyrrhiza Uralensis Water Extract Enhances Dendritic Cell Maturation And Antitumor Efficacy Of HPV Dendritic Cell-Based Vaccine[J]. Scientific Reports, 2017.	4.259
E-EL-0065c E-EL-0072c E-EL-M0511c E-EL-M0057c	E2 T FSH LH	Mouse	Mu Y, Yan W, Yin T, et al. Diet-Induced Obesity Impairs Spermatogenesis: A Potential Role For Autophagy[J]. Scientific Reports, 2017.	4.259
E-EL-M1190c	TGF- α	Mouse	Wang K C W, Astell C J, Wijesinghe P, et al. Optical Coherence Tomography-Based Contact Indentation For Diaphragm Mechanics In A Mouse Model Of Transforming Growth Factor Alpha Induced Lung Disease[J]. Scientific Reports, 2017.	4.259
E-EL-R0496c	HGF	Rat	Yuan X, Wang X, Chen C, et al. Bone Mesenchymal Stem Cells Ameliorate Ischemia/Reperfusion-Induced Damage In Renal Epithelial Cells Via microRNA-223[J]. Stem Cell Research & Therapy, 2017.	4.211
E-EL-H0099c	IL-2	Human	Zeng Z P, Wang K, Li Y Y, et al. Down-Regulation Of MicroRNA-451a Facilitates The Activation And Proliferation Of CD4+ T Cells By Targeting Myc In Patients With Dilated Cardiomyopathy[J]. The Journal of Biological Chemistry, 2016.	4.125
E-EL-M0048c E-EL-M0043c E-EL-M0046c	IFN- γ IL-4 IL-10	Mouse	Lin R, Zhang Y, Long B, et al. Oral Immunization With Recombinant Lactobacillus Acidophilus Expressing espA-Tir-M Confers Protection Against Enterohemorrhagic Escherichia Coli O157: H7 Challenge In Mice[J]. Frontiers in Microbiology, 2017.	4.076
E-EL-H0108c	IFN- γ	Human	Wu R X, Yu Y, Yin Y, et al. Platelet Lysate Supports The In Vitro Expansion Of Human Periodontal Ligament Stem Cells For Cytotherapeutic Use[J]. Journal of Tissue Engineering & Regenerative Medicine, 2016.	3.989
E-EL-H0071c	AFGF/FGF1	Human	Bai Y P, Shang K, Chen H, et al. FGF-1/-3/FGFR4 Signaling In Cancer-Associated Fibroblasts Promotes Tumor Progression In Colon Cancer Through Erk And MMP-7[J]. Cancer Science, 2015, 106(10): 1278-1287.	3.974
E-EL-H0111c E-EL-H1451c	VEGF-A MMP-9	Human	Zhang F, Lu Y, Chen Q, et al. Identification Of NCK1 As A Novel Downstream Effector Of STAT3 In Colorectal Cancer Metastasis And Angiogenesis[J]. Cellular Signalling, 2017.	3.937
E-EL-R0652c E-EL-R0091c	NGF bFGF/FGF2	Rat	Li R, Ma J, Wu Y, et al. Dual Delivery Of NGF And bFGF Coacervate Ameliorates Diabetic Peripheral Neuropathy Via Inhibiting Schwann Cells Apoptosis[J]. International Journal of Biological Sciences, 2017, 13(5): 640-651.	3.873
E-EL-H0099c E-EL-H0101c E-EL-H0102c E-EL-H0103c E-EL-H0108c	IL-2 IL-4 IL-6 IL-10 IFN- γ	Human	Li W, Dong H, Huang Y, et al. Clonorchis Sinensis Co-Infection Could Affect The Disease State And Treatment Response Of Hbv Patients[J]. Plos Neglected Tropical Diseases, 2016.	3.834
E-EL-H0109c E-EL-H0102c E-EL-H0149c E-EL-H0192c	TNF- α IL-6 IL-1 β IL-6R	Human	Veena V K, Popavath R N, Kennedy K, et al. In Vitro Antiproliferative, Pro-Apoptotic, Antimetastatic And Anti-Inflammatory Potential Of 2, 4-Diacetylphloroglucinol (DAPG) By Pseudomonas Aeruginosa Strain FP10[J]. Apoptosis, 2015, 20(10): 1281-1295.	3.833
E-EL-H1451c	MMP-9	Human	Yang X, Wang D, Ma Y, et al. Continuous Activation Of Nrf2 And Its Target Antioxidant Enzymes Leads To Arsenite-Induced Malignant Transformation Of Human Bronchial Epithelial Cells[J]. Toxicology & Applied Pharmacology, 2015, 289(2): 231-239.	3.791
E-EL-M0048c E-EL-M0043c E-EL-M0047c	IFN- γ IL-4 IL-17	Mouse	Chen Z R, Zhang G B, Wang Y Q, et al. Therapeutic Effects Of Anti-B7-H3 Antibody In An Ovalbumin-Induced Mouse Asthma Model[J]. Annals of Allergy Asthma & Immunology, 2013, 111: 276-281.	3.728



Cat. No.	Targets	Species	Publications	IF
E-AB-32609 E-EL-H0101c E-EL-H0103c	PKC ζ PAb IL-4 IL-10	Human	Fan H, Li L, Zhang Y, et al. Pkc ζ In Prostate Cancer Cells Represses The Recruitment And M2 Polarization Of Macrophages In The Prostate Cancer Microenvironment[J]. <i>Tumor Biology</i> , 2017.	3.65
E-EL-H0088c E-EL-H0048c	IL-1 α IL-8	Human	Tang Y, Jin X, Xiang Y, et al. The lncRNA MALAT1 Protects The Endothelium Against ox-LDL-Induced Dysfunction Via Upregulating The Expression Of The miR-22-3p Target Genes CXCR2 And AKT[J]. <i>Febs Letters</i> , 2015, 589(20): 3189-3196.	3.623
E-EL-H0111c	VEGF-A	Human	He Y H, Li M F, Zhang X Y, et al. NLRC5 Promotes Cell Proliferation Via Regulating The AKT/VEGF-A Signaling Pathway In Hepatocellular Carcinoma[J]. <i>Toxicology</i> , 2016, 359: 47-57.	3.582
E-EL-R2466c	INS	Rat	Zarzour A, Hamdan R, Ahmad M, et al. Phyllanthus Niruri Standardized Extract Alleviates The Progression Of Non-Alcoholic Fatty Liver Disease And Decreases Atherosclerotic Risk In Sprague-Dawley Rats[J]. <i>Nutrients</i> , 2017.	3.55
E-EL-H0109c E-EL-H0102c E-EL-H0103c	TNF- α IL-6 IL-10	Human	Cheng P, Hua W, Zhang W J, et al. Inhibitory Effect Of miR-125b On Hepatitis C Virus Core Protein-Induced TLR2/MyD88 Signaling In THP-1 Macrophages[J]. <i>World Journal of Gastroenterology</i> , 2016, 22(17): 4354-4361.	3.365
E-EL-M0025c	EGF	Mouse	Mnich E, Kowalewicz-Kulbat M, Sicińska P, et al. Impact Of Helicobacter Pylori On The Healing Process Of The Gastric Barrier[J]. <i>World Journal of Gastroenterology</i> , 2016, 22(33): 7536-7558.	3.365
E-EL-R0019c	TNF- α	Rat	Kandil E A, Abdelkader N F, El-Sayeh B M, et al. Imipramine And Amitriptyline Ameliorate The Rotenone Model Of Parkinson's Disease In Rats[J]. <i>Neuroscience</i> , 2016, 332: 26-37.	3.277
E-EL-H0180c	IL-9	Human	Tuxon T, Apaer S, Ma H Z, et al. The Potential Role Of Th9 Cell Related Cytokine And Transcription Factors In Patients With Hepatic Alveolar Echinococcosis[J]. <i>Journal of Immunology Research</i> , 2015.	3.276
E-EL-H0004c	ADP/Acrp30	Human	Gao S, Cheng Y, Zhao L, et al. The Relationships Of Irisin With Bone Mineral Density And Body Composition In PCOS Patients[J]. <i>Diabetes/Metabolism Research & Reviews</i> , 2015, 32: 421-428.	3.263
E-EL-R2466c	INS	Rat	Guo Y, Liu C Q, Shan C X, et al. Gut Microbiota After Roux-En-Y Gastric Bypass And Sleeve Gastrectomy In A Diabetic Rat Model: Increased Diversity And Associations Of Discriminant Genera With Metabolic Changes[J]. <i>Diabetes/Metabolism Research and Reviews</i> , 2017.	3.263
E-EL-H0102c E-EL-H0048c E-EL-H0149c	IL-6 IL-8 IL-1 β	Human	Tian P, Li B, He C, et al. Antidiabetic (Type 2) Effects Of Lactobacillus G15 And Q14 In Rats Through Regulation Of Intestinal Permeability And Microbiota[J]. <i>Food & Function</i> , 2016.	3.247
E-EL-M0726c E-EL-M0049c	IL-12 TNF- α	Mouse	Li J, Yuan P, Wang X, et al. Purification, Characterization And Bioactivities Of Polysaccharides From Pleurotus Ferulae[J]. <i>Food & Function</i> , 2017.	3.247
E-EL-M1169c E-EL-M0969c E-EL-M1058c E-EL-M1061c	TLR9 PIAS1 STAT4 STAT6	Mouse	Jing C, Tian X, Mei Z, et al. The Effect Of The TLR9 Ligand CpG-Oligodeoxynucleotide On The Protective Immune Response To Radiation-Induced Lung Fibrosis In Mice[J]. <i>Molecular Immunology</i> , 2016, 80: 33-40.	3.236
E-EL-M0049c E-EL-M0051c	TNF- α TGF- β 1	Mouse	Zhili M, Tao H, Wen S, et al. Inhibition Of Hepatocyte Apoptosis: An Important Mechanism Of Corn Peptides Attenuating Liver Injury Induced By Ethanol[J]. <i>International Journal of Molecular Sciences</i> , 2015, 16(9): 22062-22080.	3.226
E-EL-H0109c	TNF- α	Human	Belvedere R, Bizzarro V, Parente L, et al. The Pharmaceutical Device Prisma $\text{\textcircled{R}}$ Skin Promotes In Vitro Angiogenesis Through Endothelial To Mesenchymal Transition During Skin Wound Healing[J]. <i>International Journal of Molecular Sciences</i> , 2017.	3.226



Cat. No.	Targets	Species	Publications	IF
E-EL-R0019c E-EL-R0012c E-EL-R0015c	TNF- α IL-1 β IL-6	Rat	Borgohain M P, Lakhar M, Ahmed S, et al. Small Molecule Inhibiting NF- κ B Ameliorates Oxidative Stress And Suppresses Renal Inflammation In Early Stage Of Alloxan-Induced Diabetic Nephropathy In Rat[J]. Basic & Clinical Pharmacology & Toxicology, 2016.	3.176
E-EL-M0037c E-EL-M0049c	IL-1 β TNF- α	Mouse	Shen W, Liu J, Zhao G, et al. Repression Of Toll-Like Receptor-4 By microRNA-149-3p Is Associated With Smoking-Related COPD[J]. International Journal of Chronic Obstructive Pulmonary Disease, 2017, 12: 705-715.	3.157
E-EL-M2614c	INS	Mouse	Song H, Chu Q, Xu D, et al. Purified Betacyanins From Hylocereus Undatus Peel Ameliorate Obesity And Insulin Resistance In High-Fat-Diet-Fed Mice[J]. Journal of Agricultural and Food Chemistry, 2015, 64(1): 236-244.	3.154
E-EL-M0042c E-EL-M0049c	IL-2 TNF- α	Mouse	Chen F, Sun Y, Zheng S L, et al. Antitumor And Immunomodulatory Effects Of Ginsenoside Rh2 And Its Octyl Ester Derivative In H22 Tumor-Bearing Mice[J]. Journal of Functional Foods, 2017, 32: 382-390.	3.144
E-EL-R0160c	CASP3	Rat	Abolaji A O, Ojo M, Afolabi T T, et al. Protective Properties Of 6-Gingerol-Rich Fraction From Zingiber Officinale (Ginger) On Chlorpyrifos-Induced Oxidative Damage And Inflammation In The Brain, Ovary And Uterus Of Rats[J]. Chemico-Biological Interactions, 2017, 270: 15-23.	3.143
E-EL-R0160c	CASP3	Rat	Adedara I A, Subair I T, Ego V C, et al. Chemoprotective Role Of Quercetin In Manganese-Induced Toxicity Along The Brain-Pituitary-Testicular Axis In Rats[J]. Chemico-Biological Interactions, 2017, 263: 88-98.	3.143
E-EL-0060c E-EL-H1113c E-EL-H5410c	MDA SOD1 GPX1	Human	Zhao J, Xu S Z, Song F, et al. 2, 3, 5, 4' -Tetrahydroxystilbene-2-O- β -D-Glucoside Protects Human Umbilical Vein Endothelial Cells Against Lysophosphatidylcholine-Induced Apoptosis By Upregulating Superoxide Dismutase And Glutathione Peroxidase[J]. Iubmb Life, 2014, 66(10): 711-722.	3.141
E-EL-R0014c E-EL-R0015c E-EL-R0566c	IL-4 IL-6 IL-17	Rat	Wang R, Wu H, Chen J, et al. Antiinflammation Effects And Mechanisms Study Of Geniposide On Rats With Collagen-Induced Arthritis[J]. Phytotherapy Research, 2017.	3.092
E-EL-H1779c E-EL-H1445c E-EL-H1451c	PLAU/uPA MMP-2 MMP-9	Human	Chen H, Zou Y, Yang H, et al. Downregulation Of FoxM1 Inhibits Proliferation, Invasion And Angiogenesis Of Hela Cells In Vitro And In Vivo[J]. International Journal Of Oncology, 2014, 45: 2355-2364.	3.079
E-EL-R0153c E-EL-R2557c	α FP AFP-L3	Rat	Elsadek B, Mansour A, Saleem T, et al. The Antitumor Activity Of A Lactosaminated Albumin Conjugate Of Doxorubicin In A Chemically Induced Hepatocellular Carcinoma Rat Model Compared To Sorafenib[J]. Digestive & Liver Disease, 2017, 49(2): 213-222.	3.061
E-EL-R0506c E-EL-R0019c	hs-CRP TNF- α	Rat	Sibiya N, Ngubane P, Mabandla M. Cardio-Protective Effects Of Pectin-Insulin Patch In Streptozotocin-Induced Diabetic Rats Beneficial Effects Of Insulin Patch[J]. Journal of Diabetes, 2017.	3.039
E-EL-H2557c E-EL-H5658c E-EL-H0016c E-EL-H0149c	NLRP3 PYCARD CASP1 IL-1 β	Human	Isaza-Guzmán D M, Medina-Piedrahíta V M, Gutiérrez-Henao C, et al. Salivary Levels Of NLRP3 Inflammasome-Related Proteins As Potential Biomarkers Of Periodontal Clinical Status[J]. Journal of Periodontology, 2017.	3.03
E-EL-R0796c	PSA	Rat	Afriyie D K, Asare G A, Bugyei K, et al. Treatment Of Benign Prostatic Hyperplasia With Croton Membranaceus In An Experimental Animal Model[J]. Journal of Ethnopharmacology, 2014, 157: 90-98.	2.981
E-EL-R0019c E-EL-R0015c E-EL-R0012c E-EL-0046c E-EL-0033c	TNF- α IL-6 IL-1 β DA ST/5-HT	Rat	Bi Q R, Hou J J, Qi P, et al. Venenum Bufonis Induces Rat Neuroinflammation By Activating NF- κ B Pathway And Attenuation Of BDNF[J]. Journal of Ethnopharmacology, 2016, 186: 103-110.	2.981



Cat. No.	Targets	Species	Publications	IF
E-EL-R0019c	TNF- α	Rat	Min C, Yu Z, Wang L, et al. Tongxinluo Reduces Brain Edema And Inhibits Post-Ischemic Inflammation After Middle Cerebral Artery Occlusion In Rats[J]. Journal of Ethnopharmacology, 2016, 181: 136-145.	2.981
E-EL-R0012c E-EL-R0015c E-EL-R0674c	IL-1 β IL-6 NF- κ B p65	Rat	Borgohaina M P, Chowdhury L, Ahmeda S, et al. Renoprotective And Antioxidative Effects Of Methanolic Paederia Foetida Leaf Extract On Experimental Diabetic Nephropathy In Rats[J]. Journal of Ethnopharmacology, 2017, 198: 451-459.	2.981
E-EL-R0167c	ET-1	Rat	Kurt A, Tumkaya L, Turut H, et al. Protective Effects Of Infliximab On Lung Injury Induced By Methotrexate[J]. Archivos De Bronconeumología, 2015, 51(11): 551-557.	2.979
E-EL-H0101c E-EL-H0191c E-EL-H0104c	IL-4 IL-5 IL-13	Human	Li H T, Zhang T T, Chen Z G, et al. Intranasal Administration Of CpG Oligodeoxynucleotides Reduces Lower Airway Inflammation In A Murine Model Of Combined Allergic Rhinitis And Asthma Syndrome[J]. International Immunopharmacology, 2015, 28: 390-398.	2.956
E-EL-R0014c E-EL-R0015c E-EL-R0559c E-EL-R0084c	IL-4 IL-6 IL-7 TGF- β 1	Rat	Dai M M, Wu H, Li H, et al. Effects And Mechanisms Of Geniposide On Rats With Adjuvant Arthritis[J]. International Immunopharmacology, 2014, 20(1): 46-53.	2.956
E-EL-R0011c E-EL-R0015c	IL-1 α IL-6	Rat	Chen J Y, Wu H, Li H, et al. Anti-Inflammatory Effects And Pharmacokinetics Study Of Geniposide On Rats With Adjuvant Arthritis[J]. International Immunopharmacology, 2015, 24(1): 102-109.	2.956
E-EL-M0049c E-EL-M0046c	TNF- α IL-10	Mouse	Huang C, Liu X, Xie J, et al. MiR-146a Modulates Macrophage Polarization By Inhibiting Notch1 Pathway In RAW264. 7 Macrophages[J]. International Immunopharmacology, 2016, 32: 46-54.	2.956
E-EL-M0049c E-EL-M0044c	TNF- α IL-6	Mouse	Li H D, Chen X, Yang Y, et al. Wogonin Attenuates Inflammation By Activating PPAR- γ In Alcoholic Liver Disease[J]. International Immunopharmacology, 2017, 50: 95-106.	2.956
E-EL-R0015c E-EL-R0019c	IL-6 TNF- α	Rat	Sun Z, Liu Y, Xu D, et al. MeCP2 Regulates PTCH1 Expression Through DNA Methylation In Rheumatoid Arthritis[J]. Inflammation, 2017.	2.955
E-EL-R0096c E-EL-R0098c	Bcl-2 BAX	Rat	Lambuk L, Jafri A J, Arfuzir N N, et al. Neuroprotective Effect Of Magnesium Acetyltaurate Against NMDA-Induced Excitotoxicity In Rat Retina[J]. Neurotoxicity Research, 2016.	2.942
E-EL-R0151c E-EL-R0019c E-EL-R0012c E-EL-R0015c E-EL-R0608c E-EL-R1430c	cTnT/TNNT2 TNF- α IL-1 β IL-6 MIF ANG II	Rat	Zhou Q, Pan X, Wang L, et al. The Protective Role Of Neuregulin-1: A Potential Therapy For Sepsis-Induced Cardiomyopathy[J]. European Journal of Pharmacology, 2016, 788: 234-240.	2.896
E-EL-M0727c	IL-13	Mouse	Du P, Ma Q, Zhu Z D, et al. Mechanism Of Corilagin Interference With IL-13/STAT6 Signaling Pathways In Hepatic Alternative Activation Macrophages In Schistosomiasis-Induced Liver Fibrosis In Mouse Model[J]. European Journal of Pharmacology, 2016.	2.896
E-EL-M0037c E-EL-M0730c	IL-1 β IL-18	Mouse	Zhou F, Zhang Y, Chen J, et al. Liraglutide Attenuates Lipopolysaccharide-Induced Acute Lung Injury In Mice[J]. European Journal of Pharmacology, 2016, 791: 735-740.	2.896
E-EL-H0109c	TNF- α	Human	Liu Q, Xu C, Ji G, et al. Sublethal Effects Of Zinc Oxide Nanoparticles On Male Reproductive Cells[J]. Toxicology in Vitro, 2016, 35: 131-138.	2.866
E-EL-H0102c E-EL-H0109c	IL-6 TNF- α	Human	Hao S Y, Ji J J, Zhao H T, et al. Mitochondrion-Targeted Peptide SS-31 Inhibited Oxidized Low-Density Lipoproteins-Induced Foam Cell Formation Through Both ROS Scavenging And Inhibition Of Cholesterol Influx In Raw264.7 Cells[J]. Molecules, 2015, 20(12): 21287-21297.	2.861



Cat. No.	Targets	Species	Publications	IF
E-EL-M2451c E-EL-M0046c E-EL-M0044c E-EL-M0037c E-EL-M0049c	IL-12/p40 IL-10 IL-6 IL-1 β TNF- α	Mouse	Hamuti A, Li J Y, Zhou F F, et al. Capparis Spinosa Fruit Ethanol Extracts Exert Different Effects On The Maturation Of Dendritic Cells[J]. Molecules, 2017.	2.861
E-EL-M0132c	ApoB	Mouse	Smallwood T L, Gatti D M, Quizon P, et al. High-Resolution Genetic Mapping In The Diversity Outbred Mouse Population Identifies Apobec1 As A Candidate Gene For Atherosclerosis[J]. G3-Genes Genomes Genetics, 2014, 4(12): 2353-2363.	2.861
E-EL-R0710c E-EL-R0965c E-EL-R0966c E-EL-R0582c E-EL-R1079c	OxLDL TXB2 TXB3 LEP VWF	Rat	Zhang Y, Imam M U, Ismail M, et al. Edible Bird'S Nest Attenuates Procoagulation Effects Of High-Fat Diet In Rats[J]. Drug Design Development and Therapy, 2015, 9 : 3951-3959.	2.822
E-EL-H0119c E-EL-H0300c E-EL-H0002c E-EL-H0326c E-EL-H2164c E-EL-H1277c	REN AGT ACE Ang- II VEGF-B HIF-1 α	Human	Nath M, Chandra P, Halder N, et al. Involvement Of Renin-Angiotensin System In Retinopathy Of Prematurity - A Possible Target For Therapeutic Intervention[J]. Plos One, 2016.	2.806
E-EL-H0102c E-EL-H0109c	IL-6 TNF- α	Human	Liao Y, Liu P, Guo F, et al. Oxidative Burst Of Circulating Neutrophils Following Traumatic Brain Injury In Human[J]. Plos One, 2013.	2.806
E-EL-H0004c	ADP/Acrp30	Human	Shanaki M, Fadaei R, Moradi N, et al. The Circulating CTRP13 In Type 2 Diabetes And Non-Alcoholic Fatty Liver Patients[J]. Plos One, 2016.	2.806
E-EL-R0574c E-EL-R2397c E-EL-R0730c E-EL-R0520c E-EL-R2518c E-EL-0040c	AR NF κ B2 PIK3 α NOS2/iNOS CAPN2 NT	Rat	Nasir N A A, Agarwal R, Kadir S H S A, et al. Reduction Of Oxidative-Nitrosative Stress Underlies Anticataract Effect Of Topically Applied Tocotrienol In Streptozotocin-Induced Diabetic Rats[J]. Plos One, 2017.	2.806
E-EL-R0327c E-EL-R0243c E-EL-R0012c E-EL-R0019c	DPD OC/BGP IL-1 β TNF- α	Rat	Deng Y, Kang W, Zhao J, et al. Osteoprotective Effect Of Echinocystic Acid, A Triterpene Component From Eclipta Prostrata, In Ovariectomy-Induced Osteoporotic Rats[J]. Plos One, 2015.	2.806
E-EL-R0167c	ET-1	Rat	Damiani E, Ince C, Orlando F, et al. Effects Of The Infusion Of 4% Or 20% Human Serum Albumin On The Skeletal Muscle Microcirculation In Endotoxemic Rats[J]. Plos One, 2016.	2.806
E-EL-R0016c E-EL-R0012c	IL-10 IL-1 β	Rat	Yang J, Liu X X, Fan H, et al. Extracellular Vesicles Derived From Bone Marrow Mesenchymal Stem Cells Protect Against Experimental Colitis Via Attenuating Colon Inflammation, Oxidative Stress And Apoptosis[J]. Plos One, 2015.	2.806
E-EL-R0012c E-EL-R0015c E-EL-R0019c E-EL-R0016c	IL-1 β IL-6 TNF- α IL-10	Rat	Qin J, Ma X, Qi H, et al. Transplantation Of Induced Pluripotent Stem Cells Alleviates Cerebral Inflammation And Neural Damage In Hemorrhagic Stroke[J]. Plos One, 2015.	2.806
E-EL-R2466c E-EL-R0329c E-EL-R0022c E-EL-R0015c E-EL-R0019c	INS ADP/Acrp30 CRP IL-6 TNF- α	Rat	Zhang Y, Imam M U, Ismail M, et al. High Fat Diet-Induced Inflammation And Oxidative Stress Are Attenuated By N-Acetylneuraminic Acid In Rats[J]. Journal of Biomedical Science, 2015.	2.799
E-EL-R0150c	CEA	Rat	Hamdy S M, Sayed O N, Abdel Latif A K, et al. Hesperidin And Tiger Nut Reduced Carcinogenicity Of DMBA In Female Rats[J]. Biomedicine & Pharmacotherapy, 2016, 83: 718-724.	2.759
E-EL-R0019c E-EL-R0015c E-EL-R0506c	TNF- α IL-6 hs-CRP	Rat	Choi R Y, Woo M J, Ham J R, et al. Anti-Steatotic And Anti-Inflammatory Effects Of Hovenia Dulcis Thunb. Extracts In Chronic Alcohol-Fed Rats[J]. Biomedicine & Pharmacotherapy, 2017, 90: 393-401.	2.759



Cat. No.	Targets	Species	Publications	IF
E-EL-M0037c E-EL-M0034c E-EL-M0049c	IL-1 β IGF-1 TNF- α	Mouse	Wang C, Li H, Luo C, et al. The Effect Of Maternal Obesity On The Expression And Functionality Of Placental P-Glycoprotein: Implications In The Individualized Transplacental Digoxin Treatment For Fetal Heart Failure[J]. <i>Placenta</i> , 2015, 36(10): 1138-1147.	2.759
E-EL-H0108c E-EL-H0101c	IFN- γ IL-4	Human	Xia G, Zheng X, Yao X, et al. Expression Of Programmed Cell Death-1 And Its Ligand B7 Homolog 1 In Peripheral Blood Lymphocytes From Patients With Peripartum Cardiomyopathy[J]. <i>Clinical Cardiology</i> , 2016.	2.757
E-EL-M2614c	INS	Mouse	Song H, Lai J, Tang Q, et al. Mulberry Ethanol Extract Attenuates Hepatic Steatosis And Insulin Resistance In High-Fat Diet-Fed Mice[J]. <i>Nutrition Research</i> , 2016.	2.737
E-EL-R2466c	INS	Rat	Jin H, Ning Y, Zhou H, et al. Il-6 Promotes Islet B-Cell Dysfunction In Rat Collagen-Induced Arthritis[J]. <i>Journal of Diabetes Research</i> , 2016.	2.717
E-EL-R2466c	INS	Rat	Li H, Wang Y P, Zhang L N, et al. Perivascular Adipose Tissue-Derived Leptin Promotes Vascular Smooth Muscle Cell Phenotypic Switching Via P38 Mitogen-Activated Protein Kinase In Metabolic Syndrome Rats[J]. <i>Experimental Biology and Medicine</i> , 2014, 239(8): 954-965.	2.688
E-EL-R0019c E-EL-R0012c	TNF- α IL-1 β	Rat	Yan Q, Li Y, Cheng N, et al. Effect Of Retinoic Acid On The Function Of Lipopolysaccharide-Stimulated Bone Marrow Stromal Cells Grown On Titanium Surfaces[J]. <i>Inflammation Research</i> , 2015, 64(1): 63-70.	2.659
E-EL-R0019c	TNF- α	Rat	Soto M E, Iturriaga Hernández A V, Guarner L V, et al. Participation Of Oleic Acid In The Formation Of The Aortic Aneurysm Inmarfan Syndrome Patients[J]. <i>Prostaglandins & Other Lipid Mediators</i> , 2016, 123: 46-55.	2.64
E-EL-R0016c E-EL-R0566c E-EL-R0084c E-EL-R0009c	IL-10 IL-17 TGF- β 1 IFN- γ	Rat	Lu X, Mccoy K S, Xu J, et al. Galectin-9 Ameliorates Respiratory Syncytial Virus-Induced Pulmonary Immunopathology Through Regulating The Balance Between Th17 And Regulatory T Cells[J]. <i>Virus Research</i> , 2014, 195:162-171.	2.628
E-EL-H0109c E-EL-H0103c	TNF- α IL-10	Human	Cheng P, Hua W, Zhang W, et al. Decreased Monocyte Subsets And TLR4-Mediated Functions In Patients With Acute Severe Fever With Thrombocytopenia Syndrome (SFTS)[J]. <i>International Journal of Infectious Diseases</i> , 2015, 43: 37-42.	2.532
E-EL-H0483c	bFGF/FGF2	Human	Esnafoğlu E, Ayyıldız S N. Decreased Levels Of Serum Fibroblast Growth Factor-2 In Children With Autism Spectrum Disorder[J]. <i>Psychiatry Research</i> , 2017.	2.528
E-EL-R2466c	INS	Rat	Hong Y P, Guo W Y, Wang W X, et al. 4-Phenylbutyric Acid Attenuates Pancreatic Beta-Cell Injury In Rats With Experimental Severe Acute Pancreatitis[J]. <i>International Journal of Endocrinology</i> , 2016.	2.51
E-EL-R0011c E-EL-R0014c E-EL-R0016c E-EL-R0019c	IL-1 α IL-4 IL-10 TNF- α	Rat	Zúñigamuñoz A M, Guarner L V, Soriacastro E, et al. 17 β Estradiol Modulates Perfusion Pressure And Expression Of 5-LOX And CYP450 4A In The Isolated Kidney Of Metabolic Syndrome Female Rats[J]. <i>International Journal of Endocrinology</i> , 2015.	2.51
E-EL-R0167c E-EL-R0361c E-EL-R0039c E-EL-R0236c	ET-1 EG-VEGF LN COL4	Rat	Li G, Peng Y, Zhao T, et al. Plumbagin Alleviates Capillarization Of Hepatic Sinusoids In Vitro By Downregulating ET-1, VEGF, LN, And Type IV Collagen[J]. <i>Biomed Research International</i> , 2017.	2.476
E-EL-M0049c E-EL-M0048c E-EL-M0037c E-EL-M0044c E-EL-M0046c E-EL-M0047c	TNF- α IFN- γ IL-1 β IL-6 IL-10 IL-17	Mouse	Cheng J, Zhang L, Dai W, et al. Ghrelin Ameliorates Intestinal Barrier Dysfunction In Experimental Colitis By Inhibiting The Activation Of Nuclear Factor-Kappa B[J]. <i>Biochemical & Biophysical Research Communications</i> , 2015, 458(1): 140-147.	2.466
E-EL-R2466c	INS	Rat	Adeyemi W J, Olayaki L A. Effects Of Single Or Combined Induction Of Diabetes Mellitus And Knee Osteoarthritis On Some Biochemical And Haematological Parameters In Rats[J]. <i>Experimental and Molecular Pathology</i> , 2017.	2.423



Cat. No.	Targets	Species	Publications	IF
E-EL-M0042c E-EL-M0043c E-EL-M0048c	IL-2 IL-4 IFN- γ	Mouse	Wen Y, Yan X, Wen Y, et al. Immunogenicity Of The Recombinant HxuCBA Proteins Encoded By HxuCBA Gene Cluster Of Haemophilus Parasuis In Mice[J]. Gene, 2016, 591(2): 478-483.	2.415
E-EL-H0108c E-EL-H0109c E-EL-H0150c E-EL-H0102c	IFN- γ TNF- α IL-12 IL-6	Human	He W, Ren Y, Wang X, et al. C Reactive Protein And Enzymatically Modified LDL Cooperatively Promote Dendritic Cell-Mediated T Cell Activation[J]. Cardiovascular Pathology, 2017, 29: 1-6.	2.359
E-EL-R0019c E-EL-R0922c	TNF- α SDF-1/CXCL12	Rat	Li J, Guo W, Xiong M, et al. Effect Of SDF-1/CXCR4 Axis On The Migration Of Transplanted Bone Mesenchymal Stem Cells Mobilized By Erythropoietin Toward Lesion Sites Following Spinal Cord Injury[J]. International Journal of Molecular Medicine, 2015, 36(5): 1205-1214.	2.341
E-EL-R0019c E-EL-R0015c E-EL-R0016c E-EL-R0160c	TNF- α IL-6 IL-10 CASP3	Rat	Lu H, Wang B. Sirt1 Exerts Neuroprotective Effects By Attenuating Cerebral Ischemia/Reperfusion-Induced Injury Via Targeting P53/Microrna-22[J]. International Journal of Molecular Medicine, 2017, 39(1): 208-216.	2.341
E-EL-M0048c E-EL-M0026c E-EL-M0049c E-EL-M0043c E-EL-M0046c	IFN- γ ESM1 TNF- α IL-4 IL-10	Mouse	Abdel-Hafeez E H, Ahmad A K, Abdelgelil N H, et al. Immunopathological Assessments Of Human Blastocystis Spp. In Experimentally Infected Immunocompetent And Immunosuppressed Mice[J]. Parasitology Research, 2016.	2.329
E-EL-M1215c	TP53	Mouse	Zhang D Y, Shen X Y, Qin R, et al. Effects Of Subchronic Samarium Exposure On The Histopathological Structure And Apoptosis Regulation In Mouse Testis[J]. Environmental Toxicology & Pharmacology, 2014, 37(2): 505-512.	2.313
E-EL-R0022c E-EL-R0015c E-EL-R0019c	CRP IL-6 TNF- α	Rat	Zhang Y, Imam M U, Ismail M, et al. Edible Bird'S Nest Attenuates High Fat Diet-Induced Oxidative Stress And Inflammation Via Regulation Of Hepatic Antioxidant And Inflammatory Genes[J]. BMC Complementary and Alternative Medicine, 2015, 15: 310-316.	2.288
E-EL-R0019c E-EL-R0015c	TNF- α IL-6	Rat	Wang J, Yang H, Hu X, et al. Dobutamine-Mediated Heme Oxygenase-1 Induction Via PI3K And p38 MAPK Inhibits High Mobility Group Box 1 Protein Release And Attenuates Rat Myocardial Ischemia/Reperfusion Injury In Vivo[J]. Journal of Surgical Research, 2013, 183(2): 509-516.	2.187
E-EL-M0037c E-EL-M0044c E-EL-M0033c E-EL-M0049c	IL-1 β IL-6 IFN- β TNF- α	Mouse	Sheng X X, Sun Y J, Zhan Y, et al. The LXR Ligand GW3965 Inhibits Newcastle Disease Virus Infection By Affecting Cholesterol Homeostasis[J]. Archives of Virology, 2016, 161(9): 2491-2501.	2.058
E-EL-R0019c E-EL-R0911c	TNF- α FLT1/VEGFR1	Rat	Ruan Q, Zhao C, Ye Z, et al. Effect And Possible Mechanism Of Monocyte-Derived VEGF On Monocyte-Endothelial Cellular Adhesion After Electrical Burns[J]. Burns, 2014.	2.056
E-EL-R0582c E-EL-R0710c E-EL-R1079c	LEP OxLDL VWF	Rat	Zhang Y, Imam M U, Ismail M, et al. N-Acetylneuraminic Acid Attenuates Hypercoagulation On High Fat Diet-Induced Hyperlipidemic Rats[J]. Food & Nutrition Research, 2015, 59: 29046-29055.	2.039
E-EL-R0019c E-EL-R0015c	TNF- α IL-6	Rat	Zhang X, Bai J, Wu C L, et al. Candida Glabrata Induced Infection Of Rat Tracheal Epithelial Cells Is Mediated By TLR-2 Induced Activation Of NF- κ B[J]. Microbial Pathogenesis, 2016, 91: 115-122.	2.009
E-EL-H0017c E-EL-H0661c E-EL-H0663c	CASP3 CASP7 CASP 9	Human	Uyanikoglu H, Sabuncu T, Dursun H, et al. Circulating Levels Of Apoptotic Markers And Oxidative Stress Parameters In Women With Polycystic Ovary Syndrome: A Case-Controlled Descriptive Study[J]. Biomarkers, 2017.	2.006
E-EL-R0150c	CEA	Rat	Hamdy S M, Shabaan A M, Latif A K M A, et al. Protective Effect Of Hesperidin And Tiger Nut Against Acrylamide Toxicity In Female Rats[J]. Experimental and Toxicologic Pathology, 2017.	1.975
E-EL-R0012c E-EL-R0014c E-EL-R0015c E-EL-R0016c	IL-1 β IL-4 IL-6 IL-10	Rat	Liu F, Chang X, Tian M, et al. Nano NIO Induced Liver Toxicity Via Activating The NF- κ B Signaling Pathway In Rats[J]. Toxicology Research, 2017, 6(2): 242-250.	1.969



Cat. No.	Targets	Species	Publications	IF
E-EL-H0102c	IL-6	Human	Tang J N, Shen L, Liu C L, et al. Plasma Levels Of C1q/TNF-Related Protein 1 And Interleukin 6 In Patients With Acute Coronary Syndrome Or Stable Angina Pectoris[J]. American Journal of The Medical Sciences, 2015, 349(2): 130-136.	1.847
E-EL-H0562c	BAX	Human	Bironaite D, Daunoravicius D, Bogomolovas J, et al. Molecular Mechanisms Behind Progressing Chronic Inflammatory Dilated Cardiomyopathy[J]. BMC Cardiovascular Disorders, 2015.	1.832
E-EL-H0064c E-EL-H1976c	ET-1 PLAP/ALPP	Human	Uyanikoglu H, Turp A B, Hilali N G, et al. Serum Endothelin-1 And Placental Alkaline Phosphatase Levels In Placenta Percreta And Normal Pregnancies[J]. Journal of Maternal-Fetal & Neonatal Medicine, 2017: 1-6.	1.826
E-EL-R0160c	CASP3	Rat	Adedara I A, Olabiya B F, Ojuade T J D, et al. Taurine Reverses Sodium Fluoride-Mediated Increase In Inflammation, Caspase-3 Activity And Oxidative Damage Along The Brain-Pituitary-Gonadal Axis In Male Rats[J]. Canadian Journal of Physiology and Pharmacology, 2017.	1.822
E-EL-H2102c E-EL-H0965c E-EL-H0968c E-EL-H2340c	Plg α1-AT α2-AP 4-HNE	Human	Wu W, Liu R, Chen L, et al. Disequilibrium Of Blood Coagulation And Fibrinolytic System In Patients With Coronary Artery Ectasia[J]. Medicine, 2016.	1.804
E-EL-H0099c	IL-2	Human	Zhou N, Fu Z, Li H, et al. Ketamine, As Adjuvant Analgesics For Patients With Refractory Cancer Pain, Does Affect IL-2/IFN-γ Expression Of T Cells In Vitro? A Prospective, Randomized, Double-Blind Study[J]. Medicine, 2017.	1.804
E-EL-M0727c	IL-13	Mouse	Yang F, Wang Y, Xue J, et al. Effect Of Corilagin On The miR-21/smad7/ ERK Signaling Pathway In A Schistosomiasis-Induced Hepatic Fibrosis Mouse Model[J]. Parasitology International, 2016, 65(4): 308-315.	1.744
E-EL-H0108c E-EL-H0101c E-EL-H0105c E-EL-H0103c	IFN-γ IL-4 IL-17 IL-10	Human	Wang Z Y, Jiang M J, Wu M H, et al. Inflammatory Characteristics In Different Types Of Nonallergic Rhinitis[J]. International Journal of Clinical and Experimental Pathology, 2017, 10(3): 2887-2894.	1.706
E-EL-M0671c E-EL-M1186c E-EL-M0044c	Hepc TFR IL-6	Mouse	Hao S, Li H, Sun X, et al. An Unusual Case Of Iron Deficiency Anemia Is Associated With Extremely Low Level Of Transferrin Receptor[J]. International Journal of Clinical and Experimental Pathology, 2015, 8(7): 8613-8618.	1.706
E-EL-R2466c	INS	Rat	Liu H, Liu H Y, Jiang Y N, et al. Protective Effect Of Thymoquinone Improves Cardiovascular Function, And Attenuates Oxidative Stress, Inflammation And Apoptosis By Mediating The Pi3K/Akt Pathway In Diabetic Rats[J]. Molecular Medicine Reports, 2016, 13(3): 2836-2842.	1.692
E-EL-R1327c E-EL-R0338c E-EL-R0151c E-EL-R0520c E-EL-R0633c	CKMB D-LDH cTnT/TNNT2 NOS2/iNOS MCP-1	Rat	Lin X, Wu M, Liu B, et al. Candesartan Ameliorates Acute Myocardial Infarction In Rats Through Inducible Nitric Oxide Synthase, Nuclear Factor-κB, Monocyte Chemoattractant Protein-1, Activator Protein-1 And Restoration Of Heat Shock Protein 72[J]. Molecular Medicine Reports, 2015, 12(6): 8193-8200.	1.692
E-EL-R0391c E-EL-R0026c E-EL-R0582c	FSH LH LEP	Rat	Yang M, Yan W J, Yin T L, et al. Curcumin Ameliorates High-Fat Diet-Induced Spermatogenesis Dysfunction[J]. Molecular Medicine Reports, 2016, 14(4): 3588-3594.	1.692
E-EL-R0358c E-EL-R0160c E-EL-R0163c	EMILIN1 CASP3 CASP9	Rat	Li X, Qi Z, Zhao L, et al. Astaxanthin Reduces Type 2 Diabetic-Associated Cognitive Decline In Rats Via Activation Of PI3K/Akt And Attenuation Of Oxidative Stress[J]. Molecular Medicine Reports, 2016, 13: 973-979.	1.692
E-EL-R0019c E-EL-R0015c	TNF-α IL-6	Rat	Wang J, Hu X, Fu W, et al. Isoproterenol-Mediated Heme Oxygenase-1 Induction Inhibits High Mobility Group Box 1 Protein Release And Protects Against Rat Myocardial Ischemia/Reperfusion Injury In Vivo[J]. Molecular Medicine Reports, 2014, 9(5): 1863-1868.	1.692

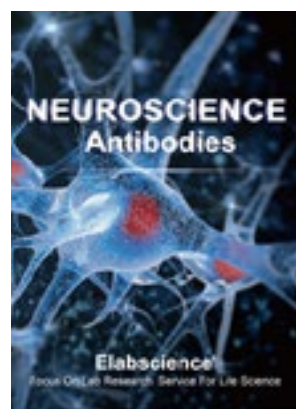
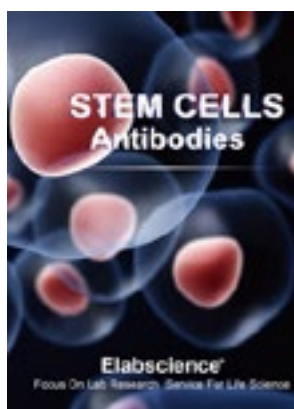


Cat. No.	Targets	Species	Publications	IF
E-EL-0065c E-EL-0072c E-EL-R0391c E-EL-R0026c E-EL-R0582c	E2 T FSH LH LEP	Rat	Mu Y, Yan W J, Yin T L, et al. Curcumin Ameliorates High-Fat Diet-Induced Spermatogenesis Dysfunction[J]. Molecular Medicine Reports, 2016, 14(4): 3588-3594.	1.692
E-EL-0060c E-EL-R1424c E-EL-R0440c E-EL-R2491c E-EL-R0674c E-EL-R0012c E-EL-R0015c	MDA SOD1 GSTT1 GPX1 NF-κB p65 IL-1β IL-6	Rat	Luo Y, Fu C, Wang Z, et al. Asiaticoside Attenuates The Effects Of Spinal Cord Injury Through Antioxidant And Anti-Inflammatory Effects, And Inhibition Of The p38-MAPK Mechanism[J]. Molecular Medicine Reports, 2015, 12: 8294-8300.	1.692
E-EL-R2466c	INS	Rat	Shang S W, Yang J L, Huang F, et al. Modified Si-Miao-San Ameliorates Pancreatic B Cell Dysfunction By Inhibition Of Reactive Oxygen Species-Associated Inflammation Through Amp-Kinase Activation[J]. Chinese Journal of Natural Medicines, 2014, 12(5): 351-360.	1.667
E-EL-R0019c E-EL-R0015c	TNF-α IL-6	Rat	Zhao X, Liu H, Li T, et al. Epigallocatechin Gallate Attenuates Hip Fracture-Induced Acute Lung Injury By Limiting Mitochondrial Dna (Mtdna) Release[J]. Medical Science Monitor, 2017, 23: 3367-3372.	1.585
E-EL-R0019c E-EL-R0015c E-EL-R0125c	TNF-α IL-6 ANG2	Rat	Lu W, Kang J, Hu K, et al. Angiotensin-(1-7) Relieved Renal Injury Induced By Chronic Intermittent Hypoxia In Rats By Reducing Inflammation, Oxidative Stress And Fibrosis[J]. Brazilian Journal of Medical and Biological Research, 2017.	1.578
E-EL-R0976c E-EL-R1097c E-EL-R0390c	TSH ft3 ft4	Rat	Orman S, Karaman K, Basok B I, et al. Effects Of Thyroid Hormone Therapy On Cut-Surface Healing Of The Remnant Stomach With Short-Term Weight Loss Alterations After Sleeve Gastrectomy[J]. Journal of Investigative Surgery, 2017.	1.532
E-EL-R0624c	MMP-9	Rat	Lu H, Liu X, Nan Z, et al. Neuroprotective Effects Of Brain-Derived Neurotrophic Factor And Noggin-Modified Bone Mesenchymal Stem Cells In Focal Cerebral Ischemia In Rats[J]. Journal of Stroke & Cerebrovascular Diseases, 2016, 25(2): 410-418.	1.517
E-EL-R0019c E-EL-R0012c E-EL-R0015c E-EL-R0016c E-EL-R0084c	TNF-α IL-1β IL-6 IL-10 TGF-β1	Rat	Karamese M, Erol H S, Albayrak M, et al. Anti-Oxidant And Anti-Inflammatory Effects Of Apigenin In A Rat Model Of Sepsis: An Immunological, Biochemical, And Histopathological Study[J]. Immunopharmacology & Immunotoxicology, 2016, 38(3): 228-237.	1.475
E-EL-H0150c	IL-12	Human	Jiang L, Hu S, Tian D, et al. A-Mannosidase I Protein Expression In Peripheral Blood Mononuclear Cells Is Upregulated During Hepatitis B Virus Infection[J]. Viral Immunology, 2016, 29(1): 33-39.	1.432
E-EL-R0167c	ET-1	Rat	Kurt A, Tumkaya L, Kalkan Y, et al. Is Adalimumab Protective In Ischemia-Reperfusion Injury In Lung[J]. Iranian Journal of Basic Medical Sciences, 2015, 18(11): 1093-1099.	1.424
E-EL-M0048c	IFN-γ	Mouse	Li H, Chen Z, Liu H, et al. Treatment Of Allergic Rhinitis With CpG Oligodeoxynucleotides Alleviates The Lower Airway Outcomes Of Combined Allergic Rhinitis And Asthma Syndrome Via A Mechanism That Possibly Involves In TSLP[J]. Experimental Lung Research, 2016, 42(6): 322-333.	1.394
E-EL-M0780c E-EL-M0627c E-EL-M2442c	MMP-2 MMP-9 EG-VEGF	Mouse	Dai X, Ji Y, Jiang P, et al. Marsdenia Tenacissima Extract Suppresses Tumor Growth And Angiogenesis In A20 Mouse Lymphoma[J]. Oncology Letters, 2017, 13(5): 2897-2902.	1.39
E-EL-R0045c E-EL-R2430c	MMP-13 COL2α1	Rat	Yang E, Zheng H, Peng H, et al. Lentivirus-Induced Knockdown Of LRP1 Induces Osteoarthritic-Like Effects And Increases Susceptibility To Apoptosis In Chondrocytes Via The Nuclear Factor-κB Pathway[J]. Experimental & Therapeutic Medicine, 2015, 10(1): 97-105.	1.261
E-EL-M0023c	Cyt-C	Mouse	Zhang K, Wang H, Guo F, et al. OMP31 Of Brucella Melitensis 16M Impairs The Apoptosis Of Macrophages Triggered By TNF-α[J]. Experimental & Therapeutic Medicine, 2016, 12(4): 2783-2789.	1.261



Cat. No.	Targets	Species	Publications	IF
E-EL-R0019c E-EL-R1424c E-EL-R0674c E-EL-R0012c E-EL-R0015c	SOD1 NF-κB p65 TNF-α IL-1β IL-6	Rat	Xun C, Mamat M, Guo H, et al. Tocotrienol Alleviates Inflammation And Oxidative Stress In A Rat Model Of Spinal Cord Injury Via Suppression Of Transforming Growth Factor-β[J]. <i>Experimental and Therapeutic Medicine</i> , 2017, 14(1): 431-438.	1.261
E-EL-H2340c E-EL-H0965c E-EL-H2447c E-EL-H5200c E-EL-H1163c	4-HNE α1-AT PI3/Elafin LTF/LF ELN	Human	Liu R, Chen L, Wu W, et al. Neutrophil Serine Proteases And Their Endogenous Inhibitors In Coronary Artery Ectasia Patients[J]. <i>Anatolian Journal of Cardiology</i> , 2015, 16(1): 23-28.	1.19
E-EL-M0049c E-EL-M0037c E-EL-M0044c	TNF-α IL-1β IL-6	Mouse	Chen L, Shen X, Chen G, et al. A Comparative Study Of The Effects Upon LPS Induced Macrophage RAW264.7 Inflammation In Vitro Of The Lipids Of Hippocampus Trimaculatus Leach[J]. <i>Journal of Oleo Science</i> , 2015, 64(12): 1273-1281.	1.076
E-EL-R0617c E-EL-R0045c	MMP-1 MMP-13	Rat	Zhang S, Liu Q, Xiao J, et al. Targeting Tissue Inhibitor Of Metalloproteinase 1/2 Using A shRNA Lentiviral System Offers A Novel Treatment Strategy Against Hepatic Fibrosis[J]. <i>International Journal of Clinical and Experimental Medicine</i> , 2016, 9(12): 23329-23336.	1.069
E-EL-M0042c E-EL-M0044c E-EL-M0048c E-EL-M0049c	IL-2 IL-6 IFN-γ TNF-α	Mouse	Wang J, Ge B, Du C, et al. Sulfated Modification Promotes The Immunomodulatory Bioactivities Of Lyciumbarbarum Polysaccharides In Vitro[J]. <i>International Journal of Clinical and Experimental Medicine</i> , 2015, 8(11): 20380-20390.	1.069
E-EL-H0113c E-EL-H0093c	LEP LEPR	Human	Tu X, Yu C, Gao M, et al. Lepr Gene Polymorphism And Plasma Soluble Leptin Receptor Levels Are Associated With Polycystic Ovary Syndrome In Han Chinese Women[J]. <i>Personalized Medicine</i> , 2017, 14(4): 299-307.	1.01
E-EL-H0077c E-EL-H0102c	Hepc IL-6	Human	Li L, Zhang J, Zhao M, et al. Applied Value Of Monitoring Serum Hecidin In Differential Diagnosis Of Infection Versus Tumor Fevers[J]. <i>Journal of Huazhong University of Science and Technology-Medical Sciences</i> , 2017, 37(2): 253-256.	0.964
E-EL-R0912c E-EL-R2492c E-EL-R0872c E-EL-R0329c E-EL-R0689c	LDL-C CHEM HDL-C ADP/Acrp30 ITLN1	Rat	Wu Q M, Ni H X, Lu X. Changes Of Adipocytokine Expression After Diabetic Rats Received Sitagliptin And The Molecular Mechanism [J]. <i>Asian Pacific Journal of Tropical Medicine</i> , 2016.	0.925
E-EL-R0019c	TNF-α	Rat	Wang T, Cao X B, Chen X W, et al. Influence Of Simvastatin On Dopaminergic Neurons Of Lipopolysaccharide-Induced Rat Model Of Parkinson's Disease[J]. <i>Asian Pacific Journal of Tropical Medicine</i> , 2015, 8(1): 64-67.	0.925
E-EL-H1539c E-EL-H0951c E-EL-H1655c	TLR4 TLR-2 mTOR	Human	Kang M, Min K, Jang J, et al. Involvement Of Immune Responses In The Efficacy Of Cord Blood Cell Therapy For Cerebral Palsy[J]. <i>Journal of Back & Musculoskeletal Rehabilitation</i> , 2015, 24(19): 2259-2268.	0.912
E-EL-H0086c	IGF-1	Human	Kini A, Fernandes C, Suryawanshi D. Effect Of Kifay On Performance, Insulin-Like Growth Factor-1, And Thyroid Hormones In Broilers[J]. <i>Asian-Australasian Journal of Animal Sciences</i> , 2016, 29(10): 1451-1457.	0.86
E-EL-R0012c E-EL-R0015c E-EL-R0016c E-EL-R0019c E-EL-R0516c E-EL-R0518c	IL-1β IL-6 IL-10 TNF-α IgA IgG	Rat	Karamese M, Aydin H, Sengul E, et al. The Immunostimulatory Effect Of Lactic Acid Bacteria In A Rat Model[J]. <i>Iranian Journal of Immunology</i> , 2016, 13(3): 220-228.	0.85
E-EL-R0019c E-EL-R0012c E-EL-R0015c	TNF-α IL-1β IL-6	Rat	Bircan B, Çakır M, Kırbağ S, et al. Effect Of Apelin Hormone On Renal Ischemia/Reperfusion Induced Oxidative Damage In Rats[J]. <i>Renal Failure</i> , 2016, 38(7): 1122-1128.	0.79
E-EL-R0019c E-EL-R0012c	TNF-α IL-1β	Rat	Yeda X, Shaoqing L, Yayi H, et al. Dexmedetomidine Protects Against Renal Ischemia And Reperfusion Injury By Inhibiting The P38-MAPK/ TXNIP Signaling Activation In Streptozotocin Induced Diabetic Rats[J]. <i>Acta Cirurgica Brasileira</i> , 2017, 32(6): 429-439.	0.729

Brochure of ELISA kits & Antibodies



Elabscience®

The background of the entire page is a dark blue, semi-transparent image of a microscopic view of cells. The cells are spherical and interconnected by thin, branching filaments, resembling a network of biological structures. The lighting is soft, highlighting the textures and boundaries of the cells.

Elabscience Biotechnology Co.,Ltd
Tel: 027-87854967 027-65022280
Web: www.elabscience.cn
Email: techsupport@elabscience.cn
tech@elabscience.cn