

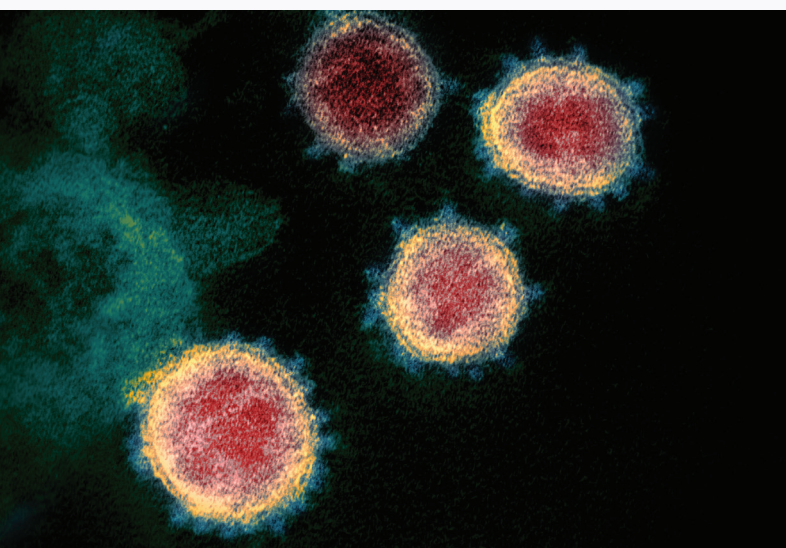


CREDIBLE CONTROLS INCREDIBLE CONFIDENCE

An unpredictable environment

Since the global outbreak of the novel coronavirus (SARS-CoV-2), adapting to rapid changes in the state of this pandemic presents an enormous challenge for laboratories striving to respond with molecular testing. Poised to make some of the greatest contributions to human health, researchers must ensure precision and accuracy while emergent understanding shifts viral targets and unstable infection rates impact available resources.

The SARS-CoV-2 pandemic has created an opportunity for innovation in diagnostic development. There is a critical need for external controls that validate and assess the performance of tests being used in clinical diagnostic labs for accuracy, reliability, and reproducibility.



Gain control amid chaos

Even when targets and demands are unpredictable, the right external controls help bring stability to your product development.

The ability to run the same native reference strain across multiple tests and platforms enables confidence that lots are reliable, quickly minimizing process or user errors.

Controls that arrive ready to run, without further preparation, mean increased laboratory efficiency and a workflow with less variability.

You should be able to count on credible solutions that are applicable no matter what the latest developments require.

That's why ATCC developed the SARS-CoV-2 External Control Kit. This kit is designed to give you more confidence in the results you provide and generate in your lab.



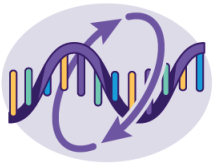
Header image: Novel Coronavirus SARS-CoV-2, by NIAID, is licensed under CC BY 2.0, image digitally collaged to duplicate viruses.

Novel Coronavirus SARS-CoV-2, by NIAID, is licensed under CC BY 2.0



ATCC | Credible leads to Incredible™

ATCC's SARS-CoV-2 External Control Kit



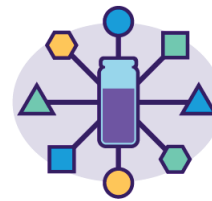
Whole-genome sequenced virus allows for nearly universal use across multiple platforms



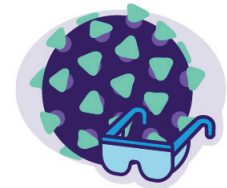
Native Washington state strain (2019-nCoV/USA-WA1/2020) is closer to the clinical sample than synthetic controls and provides an additional layer of assurance that your test is detecting the target of interest



ATCC's ready-to-use kit requires no further dilutions, which allows for optimal workflow, increased lab efficiency, and better consistency



Full-process control allows for a single control to assess the performance of critical workflow steps, and it is ideal for integrated solutions that combine extraction and amplification in a single platform



Heat-inactivated strain ensures safe handling in a BSL-1 environment



For decades, ATCC has proven its commitment to global health as a trusted source for standards during epidemics. With a deep history of providing credible materials and developing solutions, ATCC is committed to responding to the latest emergent needs.

CEDARLANE®



Regain control of assay development efforts with authenticated controls, and increase stability, accuracy, and speed-to-market.

Contact ATCC to order your kit today.

ATCC's SARS-CoV-2 External Control Kit
Cat. No. ATCC® MP-32™

 cedarlanelabs.com

 Toll free: 1-800-268-5058
Phone: 1-289-288-0001
Fax: 1-289-288-0020

 Quotes/Pricing: sales@cedarlanelabs.com
Technical Q & A: tech@cedarlanelabs.com
Orders: custserv@cedarlanelabs.com

These products are for laboratory use only. Not for human or diagnostic use. ATCC products may not be resold, modified for resale, used to provide commercial services or to manufacture commercial products without prior ATCC written approval.

Learn more about ATCC's support for COVID-19 response
atcc.org/CoV-2_QCKit



ATCC | Credible leads to Incredible™


© 2020 American Type Culture Collection. The ATCC trademark and trade name, and any other trademarks listed in this publication are trademarks owned by the American Type Culture Collection unless indicated otherwise.




Product Sheet

SARS-CoV-2 External Control Kit (ATCC® MP-32™)

Please read this FIRST



Storage Temp.
-20°C or colder



Biosafety Level
1

Intended Use

Not for in vitro diagnostic use. Research use only.

Citation of Strain

If use of this culture results in a scientific publication, it should be cited in that manuscript in the following manner: SARS-CoV-2 External Control Kit (ATCC® MP-32™)

Shipping Information

12 vials

Description

The design, format, and validation of the SARS-CoV-2 External Control Kit brings stability to a shifting environment. This ready-to-use kit requires no further dilutions, which allows for optimal workflow, increased lab efficiency, and better consistency.

The native SARS-CoV-2 Washington state strain (2019-nCoV/USAWA1/2020) provided as a positive control in this kit is whole-genome sequenced, allowing for nearly universal use across multiple platforms. Further, this clinical isolate is heat-inactivated, ensuring its safe use in a BSL-1 environment.

The human cell line WI-38 provided as a negative control in this kit allows the user to assess for SARS-CoV-2 contamination and analyze assay performance via the detection of various human housekeeping genes.

Components

6 vials of Heat-killed SARS-CoV-2 strain 2019-nCoV/USAWA1/2020 (ATCC VR-1986HK) at 20,000 copies/mL

6 vials of WI-38 cells (ATCC CCL-75) at 70,000 cells/mL



Biosafety Level: 1

Appropriate safety procedures should always be used with this material. Laboratory safety is discussed in the current publication of the *Biosafety in Microbiological and Biomedical Laboratories* from the U.S. Department of Health and Human Services Centers for Disease Control and Prevention and National Institutes for Health.

ATCC Warranty

The viability of ATCC® products is warranted for 30 days from the date of shipment, and is valid only if the product is stored and cultured according to the information included on this product information sheet. ATCC lists the media formulation that has been found to be effective for this strain. While other, unspecified media may also produce satisfactory results, a change in media or the absence of an additive from the ATCC recommended media may affect recovery, growth and/or function of this strain. If an alternative medium formulation is used, the ATCC warranty for viability is no longer valid.

Disclaimers

American Type Culture Collection
PO Box 1549
Manassas, VA 20108 USA
www.atcc.org

800.638.6597 or 703.365.2700
Fax: 703.365.2750
Email: Tech@atcc.org


Or contact your local distributor




Product Sheet

SARS-CoV-2 External Control Kit (ATCC® MP-32™)

Please read this FIRST



Storage Temp.
-20°C or colder



Biosafety Level
1

Intended Use

Not for in vitro diagnostic use. Research use only.

Citation of Strain

If use of this culture results in a scientific publication, it should be cited in that manuscript in the following manner: SARS-CoV-2 External Control Kit (ATCC® MP-32™)

Shipping Information

12 vials

This product is intended for laboratory research purposes only. It is not intended for use in humans.

While ATCC uses reasonable efforts to include accurate and up-to-date information on this product sheet, ATCC makes no warranties or representations as to its accuracy. Citations from scientific literature and patents are provided for informational purposes only. ATCC does not warrant that such information has been confirmed to be accurate.

This product is sent with the condition that you are responsible for its safe storage, handling, and use. ATCC is not liable for any damages or injuries arising from receipt and/or use of this product. While reasonable effort is made to insure authenticity and reliability of strains on deposit, ATCC is not liable for damages arising from the misidentification or misrepresentation of cultures.

Please see the enclosed Material Transfer Agreement (MTA) for further details regarding the use of this product. The MTA is also available on our Web site at www.atcc.org

Additional information on this culture is available on the ATCC web site at www.atcc.org.

© ATCC 2020. All rights reserved. ATCC is a registered trademark of the American Type Culture Collection. [12/04]

American Type Culture Collection
PO Box 1549
Manassas, VA 20108 USA
www.atcc.org

800.638.6597 or 703.365.2700
Fax: 703.365.2750
Email: Tech@atcc.org

Or contact your local distributor